

Japan-US Governors Forum 2018

Nara, as an inland region,
is struggling in the global economy.

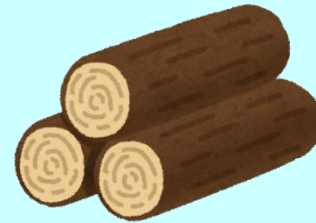
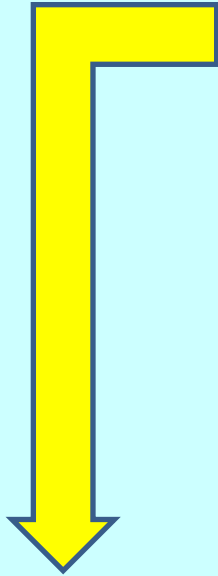
August 27, 2018

Shogo Arai

Governor of Nara Prefecture

U.S. Timbers are manufactured in Nara

Export



From Finger Lakes
Regions, N.E. of U.S.

Firms in Nara



Coating manufacture

Nara is struggling for the structure change:
From the old industries (Textile, Woods) to the new ones

New Engine Industries would be:

Module Production.

Tourism Industries.

Food Manufacturing.

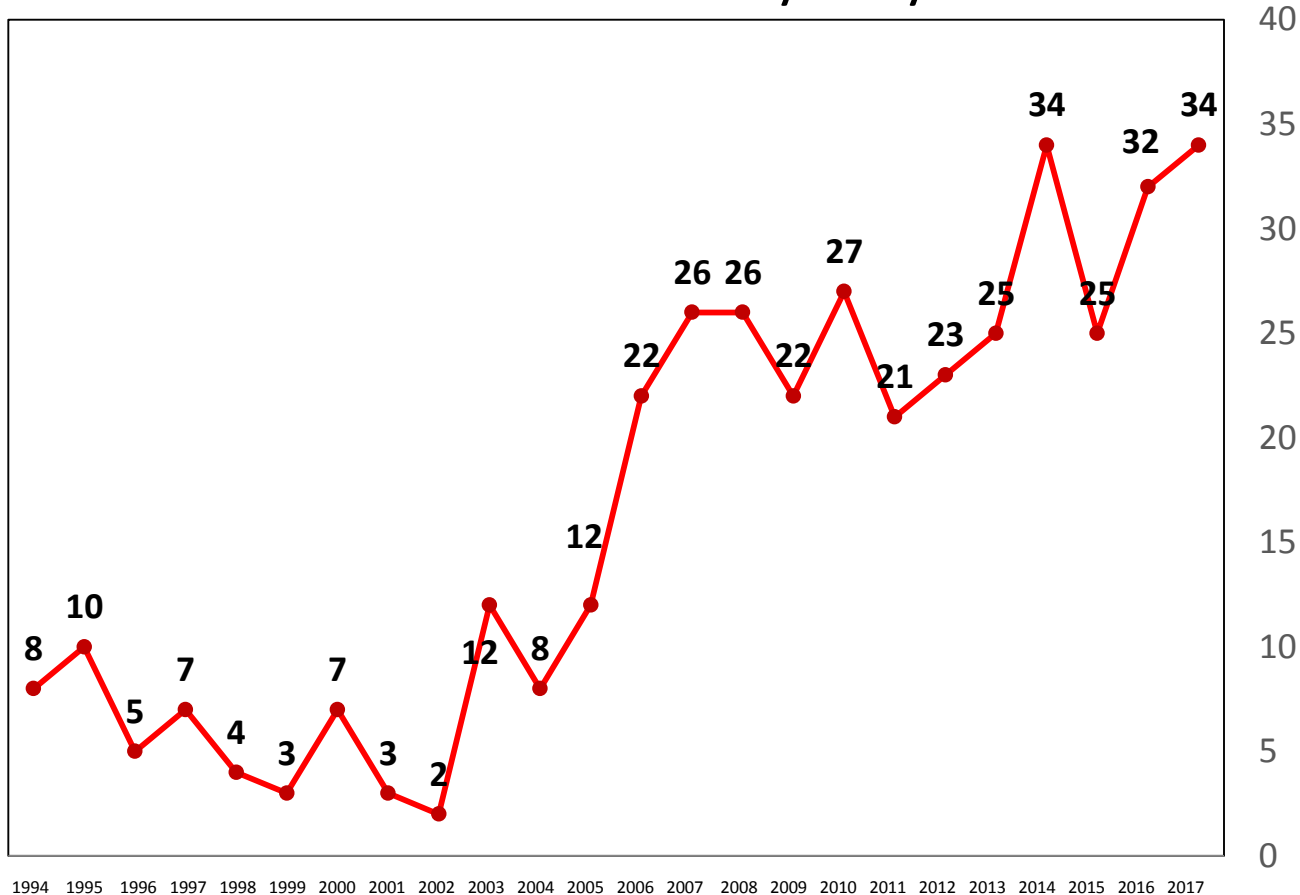
Medical Care Industries.

Education Systems.



Nara is attracting new investments

New factories built yearly



The Ranking 2016
2nd(Kinki Region) 12th(Japan)

The Ranking 2017
2nd(Kinki Region) 11th(Japan)

Nara has good Access to the Global Market.

2h 50 minutes to Tokyo by Shinkansen

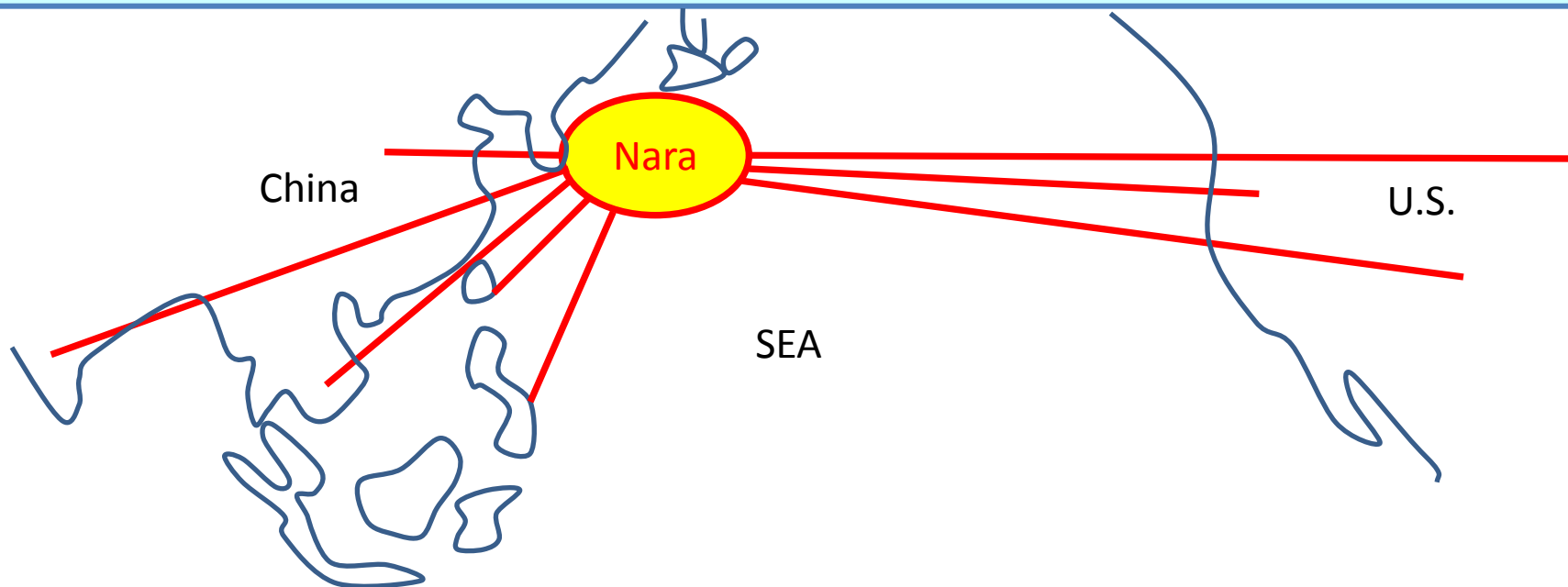
80 minutes to Kansai Airport

50 minutes to Tokyo by the
Linear in 2037.



Nara is seeking new Connections with local Regions in the U.S..

Nara would be better off of the U.S. industries, with Connections to China, Korea and Middle and South East Asia.



We invite the direct U.S. investment in Nara from where you can look at the whole East Area Market.