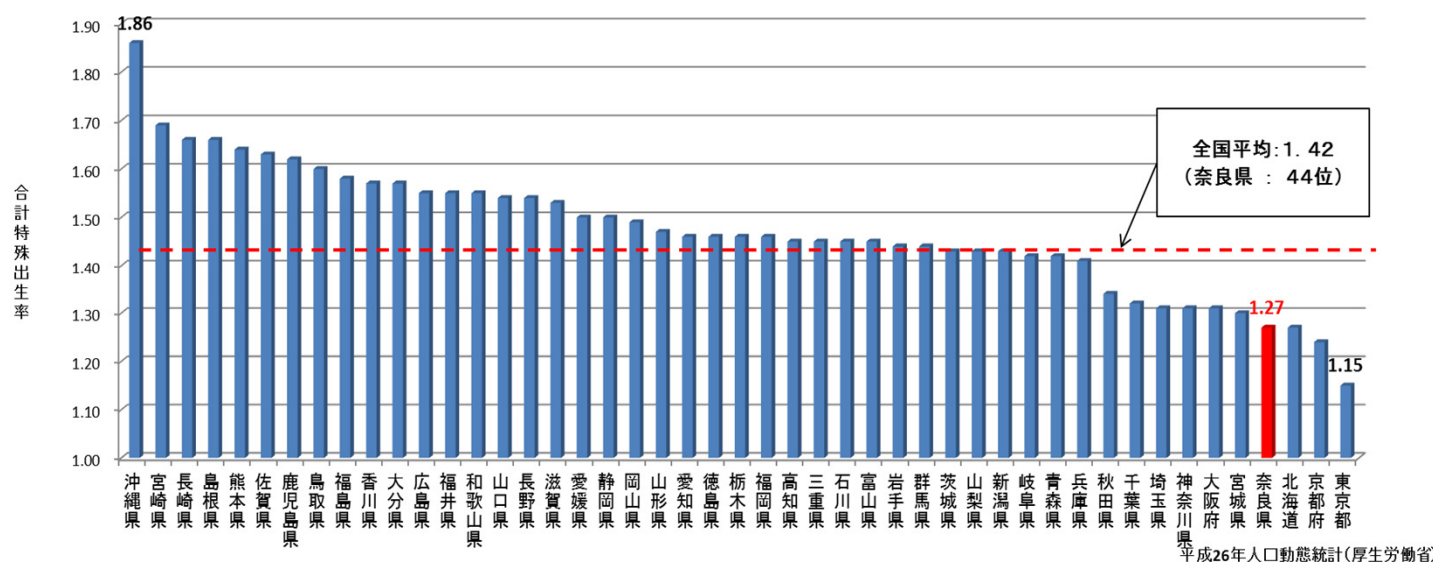
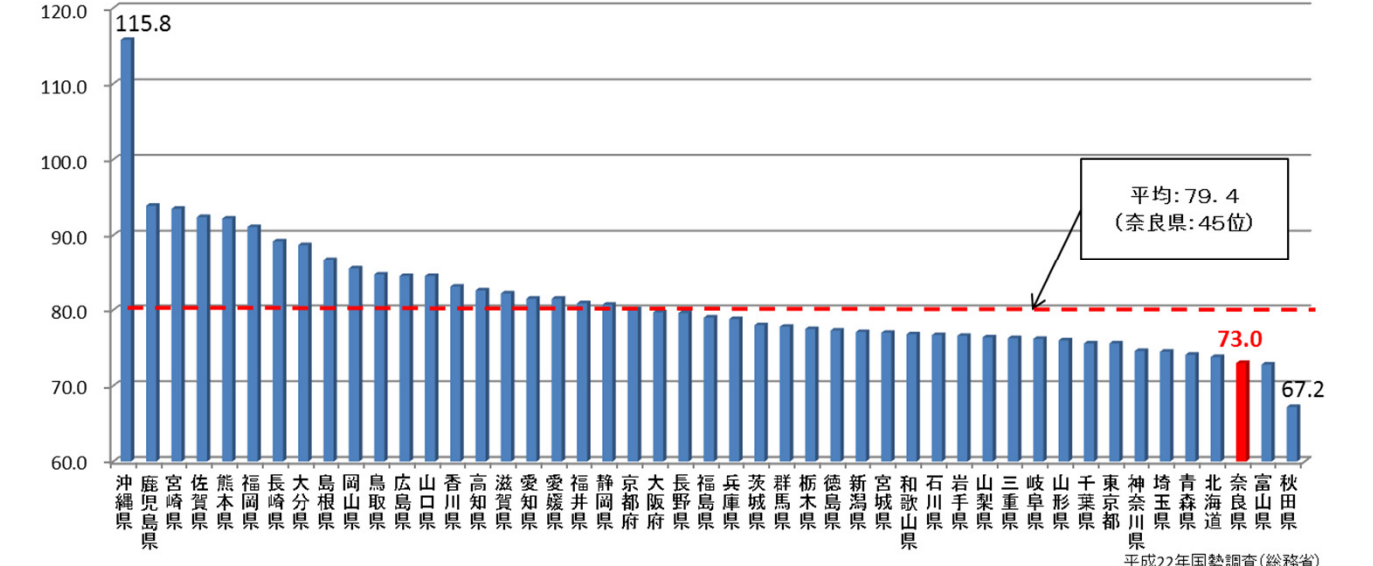


## 2 都道府県別 少子化関連データ

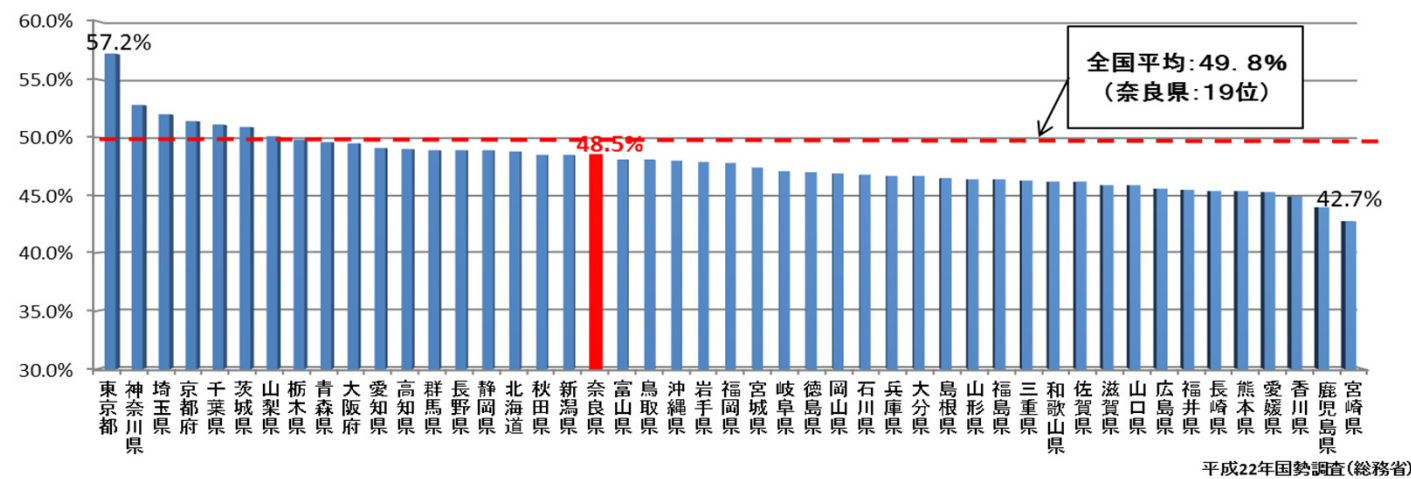
### (1) 合計特殊出生率(15~49歳)



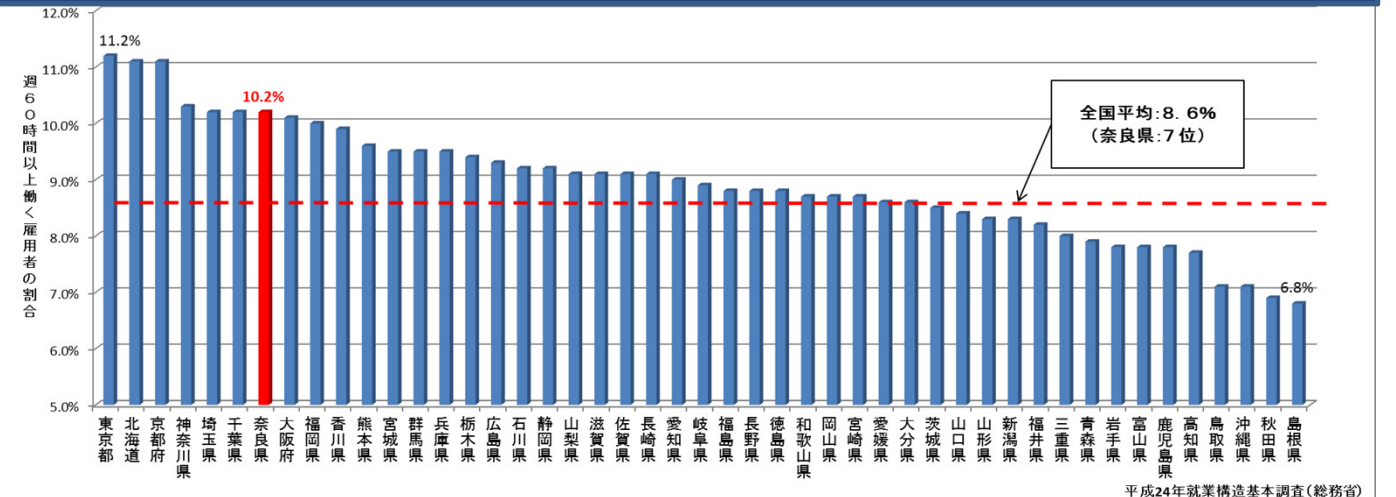
### (3) 有配偶出生率(15~49歳)



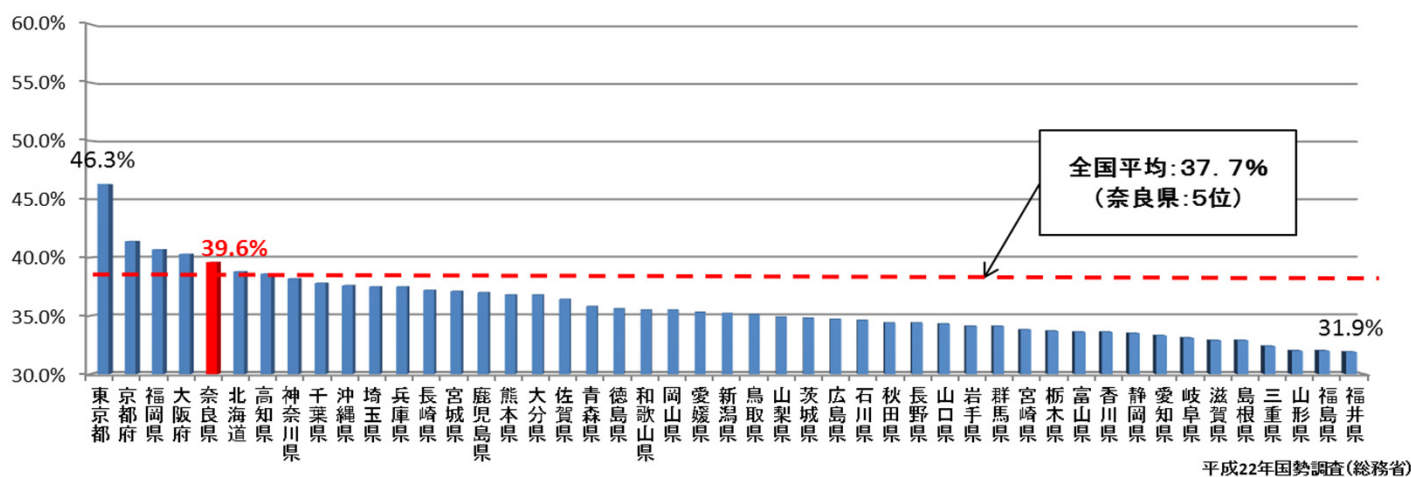
### (2) - ① 男性(25~39歳)未婚率



### (4) 週60時間以上働く雇員の割合



### (2) - ② 女性(25~39歳)未婚率



### (5) 1日当たりの通勤等時間の状況

