

Ⅲ 水産物部

入 荷 概 況 表

令和4年度	1 月	2 月	3 月	4 月	5 月	6 月
開市日数	20	19	22	22	20	21
合 計	814,327	739,846	909,563	944,600	847,764	788,620
	826,640,094	742,599,205	865,230,057	850,225,566	834,693,672	774,981,911
平均単価	1,015	1,004	951	900	985	983
1日平均取扱量	40,716	38,939	41,344	42,936	42,388	37,553
	41,332,005	39,084,169	39,328,639	38,646,617	41,734,684	36,903,901
鮮 魚	351,891	315,634	368,097	410,968	380,426	350,550
	425,444,913	363,271,804	391,448,616	394,156,408	401,247,916	378,109,221
平均単価	1,209	1,151	1,063	959	1,055	1,079
冷 凍	124,413	78,659	133,490	124,830	125,779	110,149
	171,160,857	144,359,310	180,767,694	174,892,610	176,630,583	151,073,071
平均単価	1,376	1,835	1,354	1,401	1,404	1,372
加工水産物	338,023	345,553	407,976	408,802	341,559	327,921
	230,034,324	234,968,091	293,013,747	281,176,548	256,815,173	245,799,619
平均単価	681	680	718	688	752	750

日数：日
 上段 数量：kg
 下段 金額：円
 単価：円/kg
 (税込み)

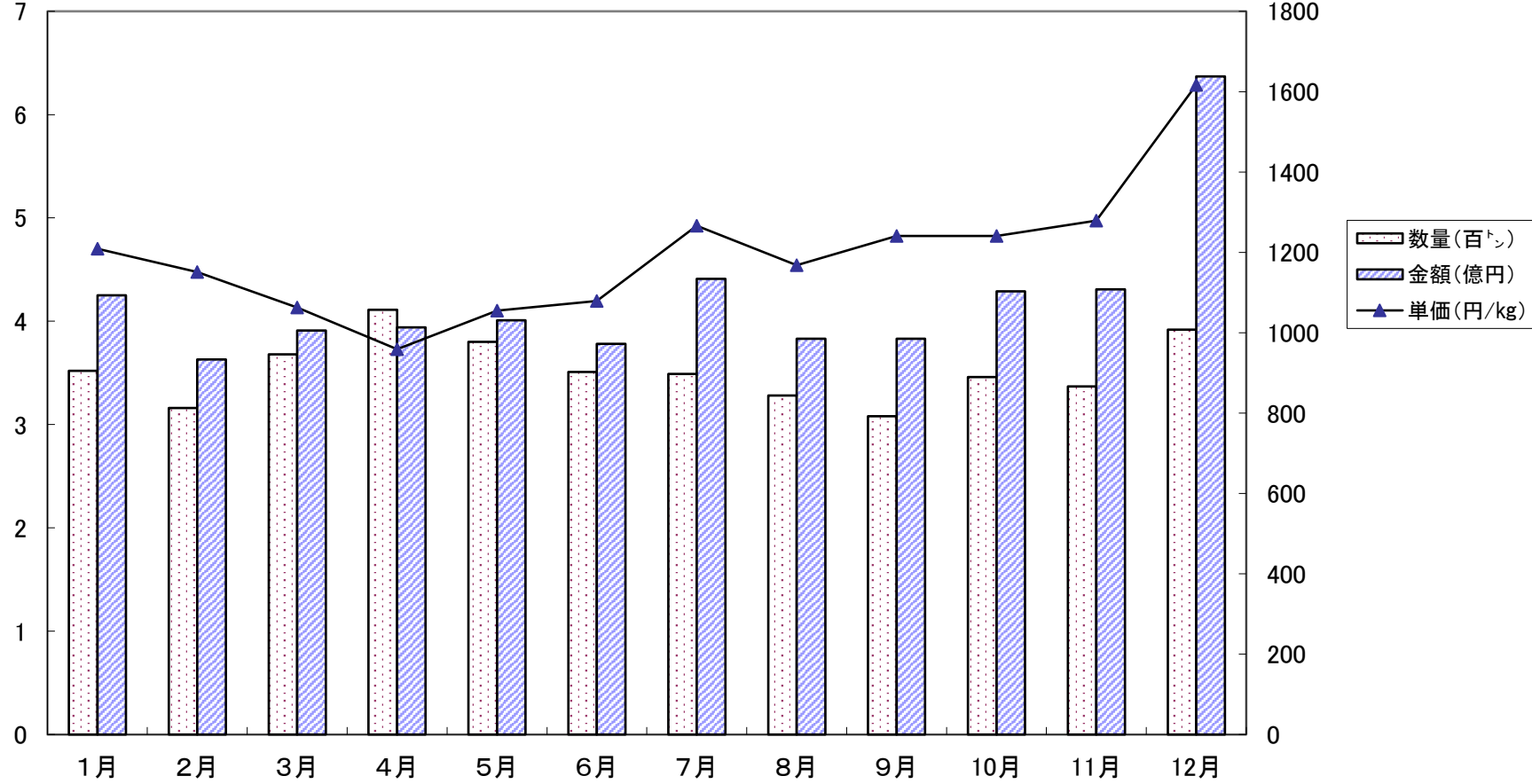
	7 月	8 月	9 月	10 月	11 月	12 月	合 計
開市日数	21	21	21	22	21	23	253
合 計	783,605	767,804	780,676	777,679	768,137	1,030,996	9,953,617
	862,925,786	814,271,634	851,996,877	870,040,351	904,927,661	1,473,282,311	10,671,815,125
平均単価	1,101	1,061	1,091	1,119	1,178	1,429	1,072
1日平均取扱量	37,315	36,562	37,175	35,349	36,578	44,826	39,342
	41,091,704	38,774,840	40,571,280	39,547,289	43,091,793	64,055,753	42,181,087
鮮 魚	348,700	328,060	308,216	345,927	336,813	391,732	4,237,014
	441,479,656	383,087,109	382,638,548	429,148,913	430,620,246	633,609,068	5,054,262,418
平均単価	1,266	1,168	1,241	1,241	1,279	1,617	1,193
冷 凍	120,475	120,864	141,539	112,706	120,369	228,766	1,542,039
	178,365,650	188,144,578	212,052,655	169,314,809	179,418,129	352,467,607	2,278,647,553
平均単価	1,481	1,557	1,498	1,502	1,491	1,541	1,478
加工水産物	314,430	318,880	330,921	319,046	310,955	410,498	4,174,564
	243,080,480	243,039,947	257,305,674	271,576,629	294,889,286	487,205,636	3,338,905,154
平均単価	773	762	778	851	948	1,187	800

月 別 ・ 種 類 別 取 扱 高

鮮 魚

(数量, 金額)

(単価)

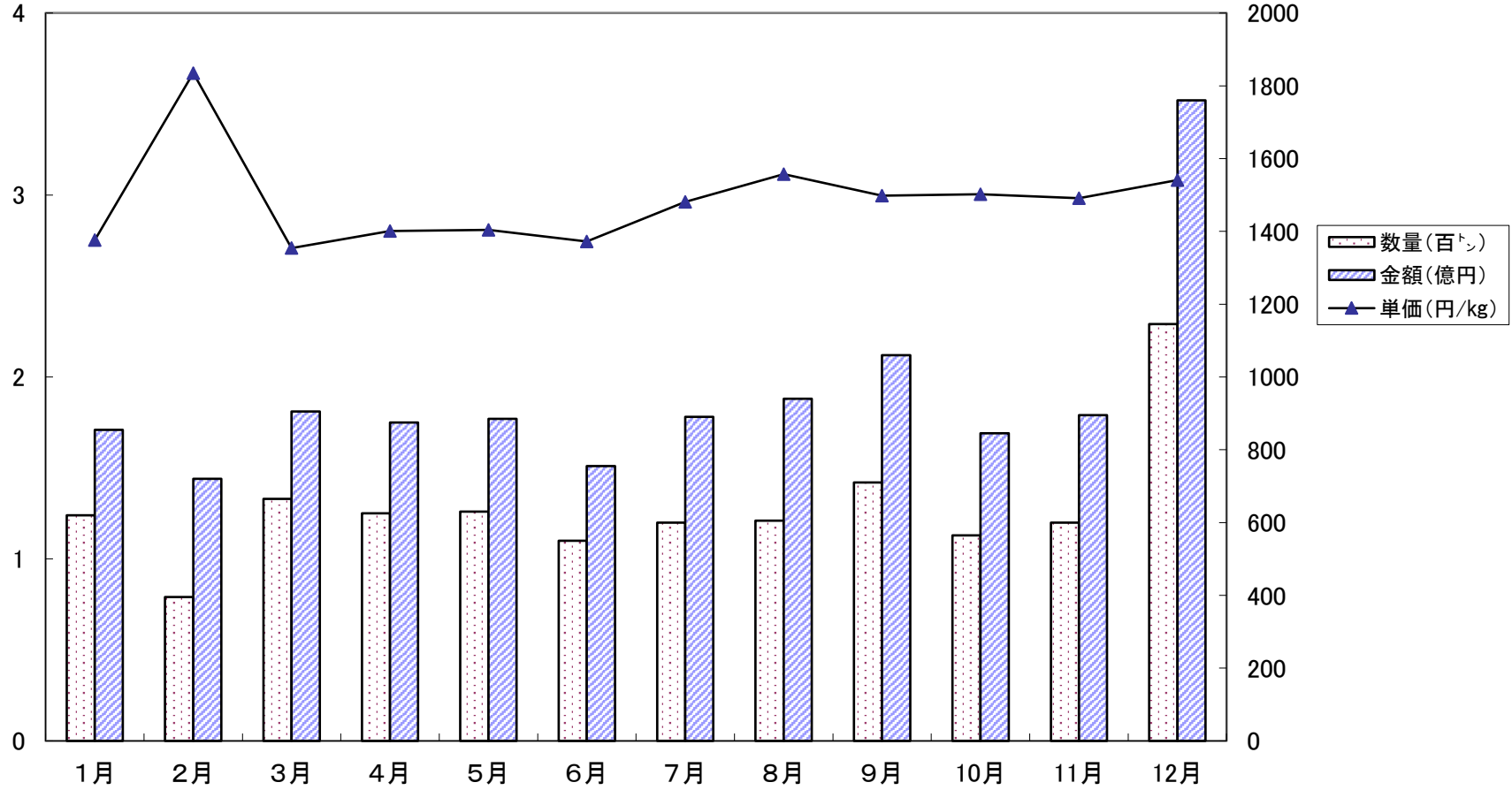


月 別 ・ 種 類 別 取 扱 高

冷 凍

(数量, 金額)

(単価)

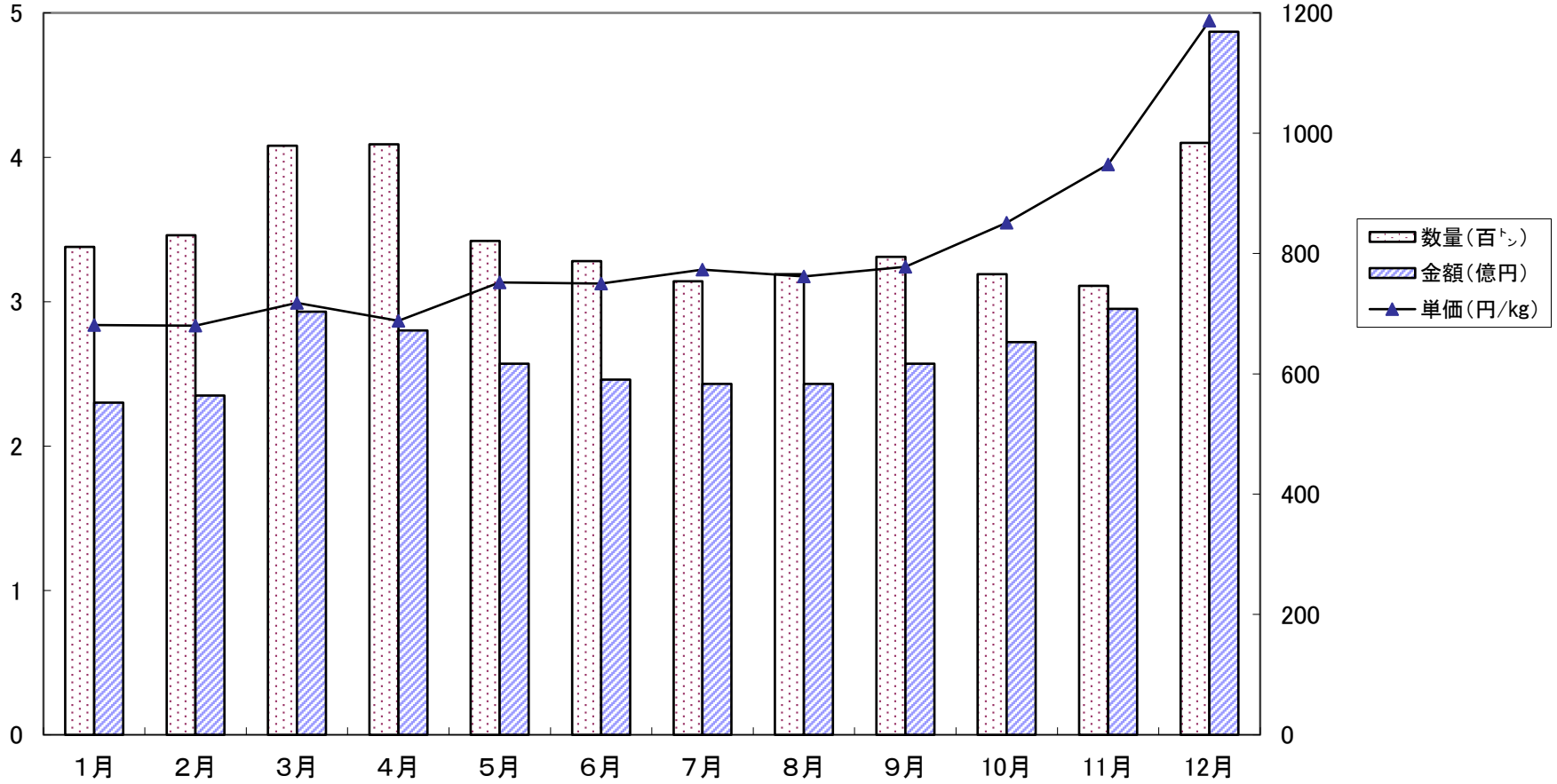


月 別 ・ 種 類 別 取 扱 高

加工水産物

(数量, 金額)

(単価)



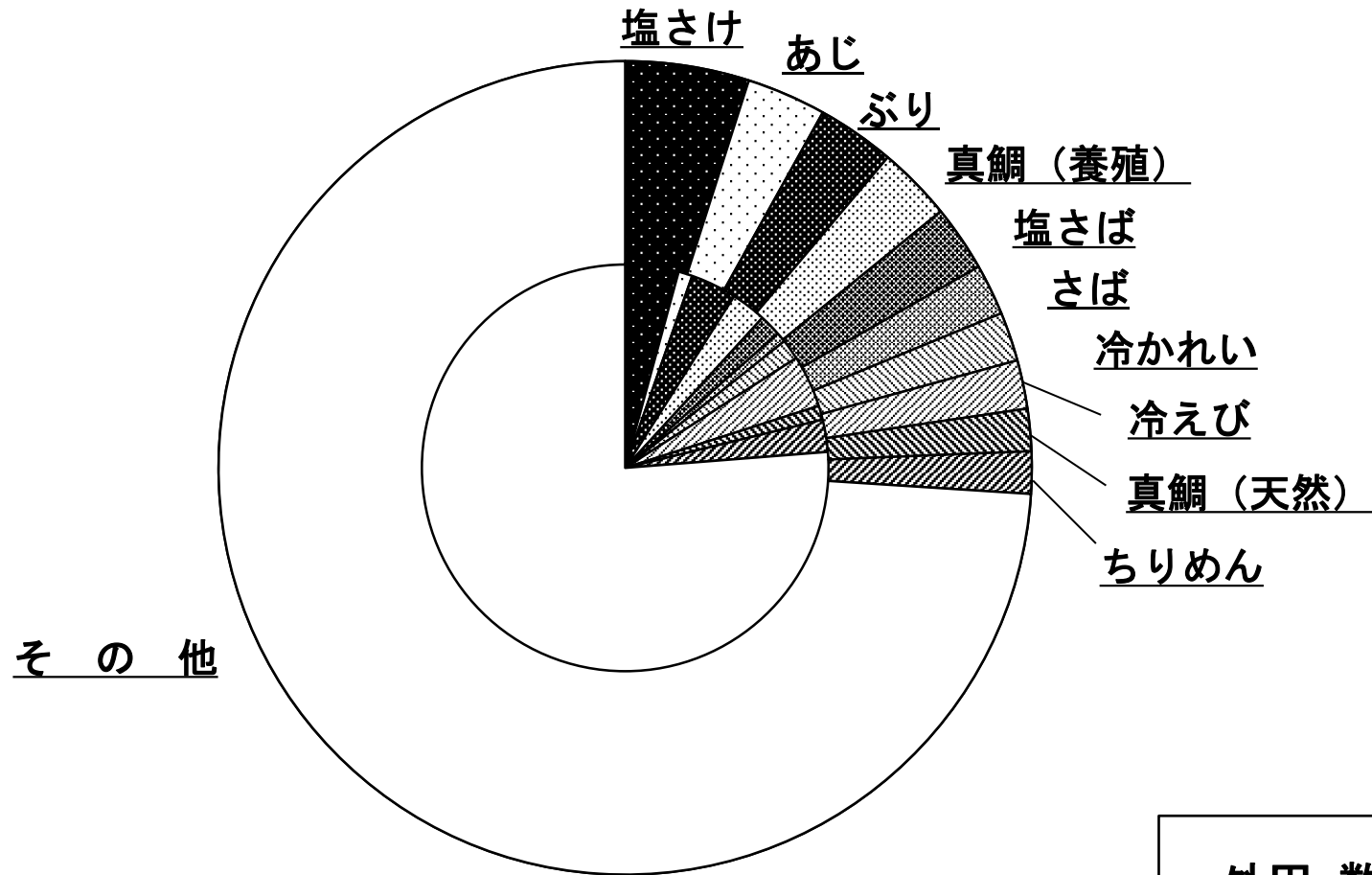
品 目 別 取 扱 量 の 順 位

(水産物)

数量=kg 金額=円 割合=%

区分 順位	品 目	数 量	割 合	金 額	割 合
1	塩さけ	489,442	4.9	452,238,563	4.2
2	あじ	314,856	3.2	118,634,100	1.1
3	ぶり	307,870	3.1	390,312,348	3.7
4	真鯛(養殖)	295,214	3.0	297,371,279	2.8
5	塩さば	261,596	2.6	184,476,789	1.7
6	さば	201,885	2.0	82,726,224	0.8
7	冷かれい	193,552	1.9	172,996,325	1.6
8	冷えび	191,888	1.9	443,078,540	4.2
9	真鯛(天然)	167,166	1.7	119,205,428	1.1
10	ちりめん	166,635	1.7	272,993,699	2.6
	そ の 他	7,363,513	74.0	8,137,781,830	76.3
	合 計	9,953,617	100.0	10,671,815,125	100.0

水産物一品目別の割合



外円:数量
内円:金額

品 目 別 ・ 月 別 取 扱 高

(鮮 魚)

上段 数量 : kg 中段 金額 : 円 下段 単価 : 円/kg

品目	合計	1月	2月	3月	4月	5月	6月	7月	8月	9月	10月	11月	12月
くろまぐろ	96,964 384,986,019 3,970	8,145 29,038,229 3,565	7,625 26,748,154 3,508	9,057 30,243,716 3,339	7,900 28,968,630 3,667	9,262 32,900,845 3,552	9,182 33,135,155 3,609	7,615 29,198,037 3,834	7,785 31,885,716 4,096	6,968 29,978,275 4,302	7,324 34,370,946 4,693	5,984 28,559,047 4,773	10,117 49,959,269 4,938
きわだ	59,832 112,902,505 1,887	4,938 10,107,506 2,047	6,068 10,954,579 1,805	7,220 12,625,138 1,749	6,105 11,388,984 1,866	6,342 10,003,522 1,577	5,515 8,751,236 1,587	4,590 8,593,794 1,872	4,068 9,281,364 2,282	2,149 4,909,726 2,285	4,038 7,698,945 1,907	4,044 7,281,818 1,801	4,755 11,305,893 2,378
めばち	3,609 9,866,247 2,734	319 814,492 2,553	95 143,840 1,514	85 180,306 2,121	75 223,528 2,980	35 28,000 800	0 0 0	0 0 0	152 496,757 3,268	642 1,737,092 2,706	767 2,176,859 2,838	505 1,679,649 3,326	934 2,385,724 2,554
かじき	8,078 16,914,998 2,094	533 1,283,418 2,408	585 1,379,403 2,358	672 1,567,460 2,333	802 1,812,508 2,260	502 1,190,014 2,371	647 1,288,573 1,992	1,362 2,030,601 1,491	819 1,395,472 1,704	465 1,152,958 2,479	442 1,093,004 2,473	793 1,583,645 1,997	456 1,137,942 2,495
ぶり	307,870 390,312,348 1,268	33,496 51,589,178 1,540	26,930 42,662,758 1,584	32,663 37,875,995 1,160	46,871 28,593,208 610	22,026 20,432,210 928	15,718 15,198,563 967	12,806 13,289,930 1,038	15,220 16,680,125 1,096	15,417 20,198,083 1,310	19,269 24,348,998 1,264	19,168 26,938,417 1,405	48,286 92,504,883 1,916
はまち	122,796 88,349,877 719	8,870 6,840,531 771	7,616 5,234,818 687	8,269 6,028,417 729	14,684 9,075,623 618	13,252 9,875,785 745	9,756 7,049,838 723	8,574 7,157,594 835	12,702 9,053,948 713	10,364 7,774,344 750	10,383 7,412,954 714	10,808 7,356,055 681	7,518 5,489,970 730
あじ	314,856 118,634,100 377	27,836 8,651,063 311	22,451 9,066,934 404	31,802 11,520,601 362	30,743 10,243,006 333	34,780 13,223,020 380	42,857 15,496,243 362	29,811 10,706,313 359	28,565 8,445,815 296	18,685 7,807,524 418	18,304 9,649,019 527	9,492 4,883,456 514	19,530 8,941,106 458
いわし	121,663 37,083,803 305	7,974 2,961,170 371	11,961 3,945,620 330	13,508 3,460,482 256	14,516 3,535,975 244	12,686 3,128,694 247	11,947 3,783,116 317	11,988 3,741,130 312	9,240 2,531,826 274	10,967 3,327,736 303	7,714 2,723,714 353	3,710 1,875,702 506	5,452 2,068,638 379
するめいか	78,963 59,474,012 753	3,451 3,127,245 906	6,974 5,645,584 810	6,958 5,932,454 853	8,320 6,468,307 777	8,963 7,087,746 791	11,909 7,757,216 651	14,749 9,191,164 623	8,125 6,262,576 771	4,442 3,726,441 839	3,281 2,763,211 842	1,781 1,497,068 841	10 15,000 1,500
さば	201,885 82,726,224 410	17,561 8,365,973 476	23,313 8,637,224 370	23,812 7,782,598 327	19,057 6,462,166 339	15,254 5,233,261 343	16,517 6,045,228 366	15,051 5,531,236 367	14,709 5,480,232 373	15,876 7,618,940 480	13,929 6,540,989 470	14,432 7,624,904 528	12,374 7,403,473 598
さんま	78,347 67,534,644 862	2,010 1,469,384 731	1,829 1,118,556 612	2,331 1,264,832 543	1,584 1,223,160 772	1,548 1,153,228 745	1,560 1,101,256 706	5,284 4,916,880 931	8,964 8,186,892 913	13,219 13,495,555 1,021	28,156 23,364,141 830	10,882 9,245,432 850	980 995,328 1,016
れんこだい	18,551 11,314,201 610	1,312 763,440 582	1,681 890,845 530	1,669 848,953 509	1,478 701,757 475	930 528,664 568	777 482,483 621	881 630,289 715	757 584,404 772	2,204 1,368,737 621	2,256 1,290,929 572	2,018 1,121,821 556	2,588 2,101,879 812
あまだい	8,891 24,074,138 2,708	388 1,439,021 3,709	193 739,702 3,833	436 1,544,392 3,542	837 2,232,048 2,667	992 2,348,685 2,368	969 2,296,884 2,370	1,326 2,951,855 2,226	761 1,803,233 2,370	1,183 2,912,097 2,462	845 2,277,223 2,695	661 2,035,191 3,079	300 1,493,807 4,979
はも	133,922 100,196,770 748	4,558 2,372,225 520	1,857 1,131,750 609	3,187 2,477,479 777	7,658 5,093,919 665	12,563 9,581,324 763	19,415 19,080,911 983	23,749 21,991,622 926	25,285 15,782,642 624	14,952 11,391,712 762	9,129 5,781,456 633	8,216 3,964,858 483	3,353 1,546,872 461
まなかつお	4,508 8,997,800 1,996	581 1,130,027 1,945	425 799,596 1,881	870 1,179,755 1,356	384 580,053 1,511	192 421,142 2,193	85 283,637 3,337	211 693,352 3,286	207 665,990 3,217	43 93,524 2,175	441 802,993 1,821	673 1,410,501 2,096	396 937,230 2,367

品 目 別 ・ 月 別 取 扱 高

(鮮 魚)

上段 数量 : kg 中段 金額 : 円 下段 単価 : 円/kg

品目	合計	1月	2月	3月	4月	5月	6月	7月	8月	9月	10月	11月	12月
いとより	18,693	881	830	1,810	1,656	1,923	1,535	1,204	1,967	1,655	1,775	2,011	1,446
	13,552,024	562,483	555,021	1,307,545	1,217,742	1,232,235	1,318,036	935,264	1,559,835	1,271,537	1,259,071	1,404,985	928,270
	725	638	669	722	735	641	859	777	793	768	709	699	642
たちうお	17,442	1,856	864	1,457	1,459	1,326	868	1,731	1,208	1,569	2,165	1,478	1,461
	27,338,518	2,487,398	1,424,464	2,273,832	2,295,433	1,975,763	1,651,127	3,061,765	2,331,945	2,783,822	2,734,994	2,182,966	2,135,009
	1,567	1,340	1,649	1,561	1,573	1,490	1,902	1,769	1,930	1,774	1,263	1,477	1,461
かつお	140,214	2,498	2,159	9,128	16,369	24,380	25,213	18,507	12,990	11,572	8,378	5,094	3,926
	100,646,879	2,880,187	1,880,992	6,969,836	12,241,891	14,149,297	15,297,584	14,204,367	10,673,127	8,903,307	5,993,024	4,269,140	3,184,127
	718	1,153	871	764	748	580	607	768	822	769	715	838	811
真鯛 (天然)	167,166	8,050	9,670	14,389	24,978	22,240	13,042	11,685	12,780	12,798	11,652	13,168	12,714
	119,205,428	7,010,733	8,485,051	11,038,638	14,393,146	12,388,675	8,455,783	8,017,121	8,750,494	9,742,593	9,023,374	10,332,507	11,567,313
	713	871	877	767	576	557	648	686	685	761	774	785	910
真鯛 (養殖)	295,214	28,744	19,312	25,542	24,567	24,929	21,806	21,246	23,655	23,101	24,034	22,937	35,341
	297,371,279	26,759,115	18,135,483	23,501,990	22,880,907	23,222,432	20,393,777	20,694,155	24,786,301	24,434,332	26,033,101	26,014,324	40,515,362
	1,007	931	939	920	931	932	935	974	1,048	1,058	1,083	1,134	1,146
すけそうこ	9,217	1,045	514	910	419	8	0	0	0	6	668	2,110	3,537
	16,389,058	1,612,238	717,660	1,181,532	414,829	9,504	0	0	0	25,720	1,398,147	3,541,574	7,487,854
	1,778	1,543	1,396	1,298	990	1,188				4,287	2,093	1,678	2,117
たこ	26,844	2,234	1,885	1,422	1,813	2,116	2,694	3,373	3,441	1,769	2,312	2,096	1,689
	56,004,580	4,207,587	3,254,013	3,478,445	4,087,397	4,284,764	5,266,466	6,239,272	6,190,283	4,052,907	5,631,500	5,242,101	4,069,845
	2,086	1,883	1,726	2,446	2,254	2,025	1,955	1,850	1,799	2,291	2,436	2,501	2,410
あさり	19,823	2,075	928	1,221	1,605	1,756	1,861	1,736	1,524	1,968	2,473	1,548	1,128
	25,881,012	2,731,714	1,419,951	1,905,271	2,342,989	2,419,463	2,541,010	2,275,778	1,763,116	2,049,795	2,322,012	2,063,643	2,046,270
	1,306	1,316	1,530	1,560	1,460	1,378	1,365	1,311	1,157	1,042	939	1,333	1,814
うなぎ	52,759	2,204	2,244	3,685	3,865	3,333	3,766	16,398	4,639	3,770	2,989	2,552	3,314
	192,503,467	7,334,951	8,310,364	12,867,514	11,508,899	9,833,991	10,193,934	72,003,945	16,405,671	14,553,286	9,515,595	9,265,685	10,709,632
	3,649	3,328	3,703	3,492	2,978	2,950	2,707	4,391	3,536	3,860	3,184	3,631	3,232
かき	94,881	17,989	15,916	8,780	2,807	2,822	3,360	3,328	3,065	2,517	7,430	11,813	15,054
	135,509,237	25,392,463	21,449,269	11,937,467	3,314,741	3,587,853	3,518,555	3,550,303	3,124,905	3,078,973	11,545,842	19,876,567	25,132,299
	1,428	1,412	1,348	1,360	1,181	1,271	1,047	1,067	1,020	1,223	1,554	1,683	1,669
その他鮮魚	1,834,025	162,343	141,709	157,214	170,416	156,266	129,551	131,495	125,432	129,915	155,773	178,838	195,073
	2,556,493,250	214,513,142	178,540,173	190,453,968	202,855,562	211,007,799	187,722,610	189,873,889	188,964,440	194,249,532	221,396,872	239,369,190	337,546,073
	1,394	1,321	1,260	1,211	1,190	1,350	1,449	1,444	1,507	1,495	1,421	1,338	1,730

品 目 別 ・ 月 別 取 扱 高

(冷 凍)

上段 数量 : kg 中段 金額 : 円 下段 単価 : 円/kg

品目	合計	1月	2月	3月	4月	5月	6月	7月	8月	9月	10月	11月	12月
冷くろまぐろ	26,660	1,825	1,911	2,027	2,683	2,603	1,889	2,629	2,530	2,719	1,832	1,647	2,365
	98,752,387	6,155,525	6,171,996	6,285,509	9,322,342	9,299,767	6,945,067	8,831,276	9,242,364	10,857,455	7,597,936	7,254,897	10,788,253
	3,704	3,373	3,230	3,101	3,475	3,573	3,677	3,359	3,653	3,993	4,147	4,405	4,562
冷きわだ	151,306	11,827	9,515	11,576	12,715	13,754	11,726	11,584	13,573	13,786	12,916	12,799	15,535
	209,107,044	15,504,775	12,491,962	15,954,478	16,710,300	18,389,542	15,967,141	16,357,140	19,506,952	19,479,723	18,464,014	17,846,926	22,434,091
	1,382	1,311	1,313	1,378	1,314	1,337	1,362	1,412	1,437	1,413	1,430	1,394	1,444
冷めばち	37,906	2,551	3,224	4,840	4,232	4,302	2,323	3,018	3,029	3,199	2,800	1,177	3,211
	71,939,815	4,917,300	5,983,624	8,626,610	8,071,206	8,285,021	4,768,308	5,888,026	6,218,929	6,261,572	5,094,400	2,210,422	5,614,397
	1,898	1,928	1,856	1,782	1,907	1,926	2,053	1,951	2,053	1,957	1,819	1,878	1,748
冷いんど	902	96	71	34	132	52	88	143	41	95	27	35	88
	3,519,865	380,484	238,799	150,626	465,743	229,446	252,484	573,783	226,076	283,479	125,690	132,592	460,663
	3,902	3,963	3,363	4,430	3,528	4,412	2,869	4,012	5,514	2,984	4,655	3,788	5,235
冷かじき	1,065	267	46	83	61	81	60	80	60	72	85	40	130
	1,358,475	204,876	57,785	99,187	77,306	109,318	84,780	115,560	93,420	104,040	136,803	64,800	210,600
	1,276	767	1,256	1,195	1,267	1,350	1,413	1,445	1,557	1,445	1,609	1,620	1,620
冷するめいか	6,150	1,190	657	939	1,015	528	420	362	244	202	130	300	163
	5,204,400	881,982	493,864	704,256	784,506	484,360	362,076	327,976	258,892	223,372	149,176	320,176	213,764
	846	741	752	750	773	917	862	906	1,061	1,106	1,148	1,067	1,311
冷もんごう	28,983	2,179	2,197	2,430	2,451	2,520	2,006	2,512	2,307	2,398	2,356	2,302	3,325
	74,337,178	4,951,449	4,712,570	5,456,597	5,807,228	5,925,315	5,041,152	6,227,235	6,331,863	6,732,093	6,600,705	6,639,541	9,911,430
	2,565	2,272	2,145	2,246	2,369	2,351	2,513	2,479	2,745	2,807	2,802	2,884	2,981
冷さけ	124,036	8,149	9,248	10,702	11,287	8,990	8,140	8,336	8,211	25,433	7,195	9,299	9,046
	179,028,468	10,371,243	11,485,361	13,317,468	14,111,218	11,844,371	11,215,682	11,934,660	13,393,112	42,233,277	11,394,682	13,556,202	14,171,192
	1,443	1,273	1,242	1,244	1,250	1,318	1,378	1,432	1,631	1,661	1,584	1,458	1,567
冷えび	191,888	15,799	13,139	16,604	15,868	16,165	13,625	13,865	17,759	13,106	14,321	14,391	27,246
	443,078,540	33,407,120	28,063,674	36,390,418	35,390,544	35,824,675	30,898,973	32,423,597	42,505,036	30,907,081	34,750,031	33,587,011	68,930,380
	2,309	2,115	2,136	2,192	2,230	2,216	2,268	2,339	2,393	2,358	2,427	2,334	2,530
冷ずわいがに	10,942	1,810	264	322	290	184	111	106	1,158	590	317	835	4,955
	53,918,121	11,146,290	1,141,666	1,748,581	1,530,672	718,200	410,250	482,750	5,175,100	2,559,404	903,608	4,177,464	23,924,136
	4,928	6,158	4,324	5,430	5,278	3,903	3,696	4,554	4,469	4,338	2,850	5,003	4,828
冷たこ	68,158	4,579	5,010	8,895	4,573	4,877	6,225	3,561	5,849	5,951	5,301	5,742	7,595
	85,519,436	5,682,505	6,113,258	10,845,638	6,032,582	6,731,922	5,067,790	4,922,973	8,094,743	7,464,260	6,874,403	7,505,666	10,183,696
	1,255	1,241	1,220	1,219	1,319	1,380	814	1,382	1,384	1,254	1,297	1,307	1,341
冷かれい	193,552	20,107	19,548	18,721	17,246	17,385	16,360	13,794	14,249	14,827	14,655	13,903	12,757
	172,996,325	15,303,628	15,351,431	15,686,134	14,839,251	14,675,889	14,103,195	12,118,611	13,470,897	14,766,457	15,137,717	14,337,898	13,205,217
	894	761	785	838	860	844	862	879	945	996	1,033	1,031	1,035
冷たら	6,466	568	447	580	681	605	452	450	496	471	575	479	662
	9,612,888	759,137	580,510	820,876	989,195	923,992	663,125	627,427	740,644	737,631	914,740	823,464	1,032,147
	1,487	1,337	1,299	1,415	1,453	1,527	1,467	1,394	1,493	1,566	1,591	1,719	1,559
その他冷凍魚	694,025	53,466	13,382	55,737	51,596	53,733	46,724	60,035	51,358	58,690	50,196	57,420	141,688
	870,274,611	61,494,543	51,472,810	64,681,316	60,760,517	63,188,765	55,293,048	77,534,636	62,886,550	69,442,811	61,170,904	70,961,070	171,387,641
	1,254	1,150	3,846	1,160	1,178	1,176	1,183	1,291	1,224	1,183	1,219	1,236	1,210

品 目 別 ・ 月 別 取 扱 高

(加工水産物)

上段 数量 : kg 中段 金額 : 円 下段 単価 : 円/kg

品目	合計	1月	2月	3月	4月	5月	6月	7月	8月	9月	10月	11月	12月
塩さけ	489,442 452,238,563 924	39,025 33,168,975 850	46,677 31,829,960 682	57,113 43,158,887 756	61,115 43,255,391 708	35,910 33,962,952 946	35,956 37,002,426 1,029	33,026 36,491,174 1,105	34,155 36,560,750 1,070	38,359 38,447,921 1,002	37,487 40,581,506 1,083	34,422 37,606,046 1,093	36,197 40,172,575 1,110
塩ます	3,558 2,664,060 749	8 6,000 750	8 6,000 750	15 12,000 800	8 6,000 750	23 15,400 670	368 280,000 761	438 334,750 764	439 336,600 767	1,303 982,100 754	565 411,910 729	200 154,600 773	183 118,700 649
塩さば	261,596 184,476,789 705	23,417 13,547,208 579	21,435 13,558,410 633	22,302 14,371,979 644	23,116 15,325,577 663	21,056 15,254,816 724	22,393 15,680,204 700	18,743 13,799,464 736	21,723 15,081,227 694	21,935 15,867,147 723	21,332 17,115,244 802	20,548 16,092,249 783	23,596 18,783,264 796
塩すけそうこ	35,430 53,901,542 1,521	2,764 3,714,340 1,344	3,848 4,762,391 1,238	3,944 5,343,093 1,355	3,842 5,410,593 1,408	2,900 4,256,913 1,468	2,986 4,839,614 1,621	2,679 4,243,302 1,584	2,866 5,032,684 1,756	3,039 5,654,137 1,861	2,773 4,333,553 1,563	1,756 2,895,284 1,649	2,033 3,415,638 1,680
塩かずのこ	42,086 135,107,041 3,210	528 865,985 1,640	342 720,770 2,108	967 2,694,234 2,786	442 806,488 1,825	386 666,525 1,727	440 882,595 2,006	383 628,391 1,641	674 1,107,282 1,643	411 773,861 1,883	297 672,958 2,266	3,633 20,426,662 5,623	33,583 104,861,290 3,122
身欠にしん	4,739 3,918,039 827	275 220,222 801	309 226,195 732	321 250,949 782	377 279,428 741	403 300,023 744	407 282,403 694	446 365,263 819	318 289,624 911	464 410,508 885	530 396,260 748	462 458,815 993	427 438,349 1,027
棒だら	2,522 14,355,112 5,692	0 0	0 0	20 125,280 6,264	0 0	0 0	0 0	0 0	0 0	0 0	0 0	830 5,304,960 6,392	1,672 8,924,872 5,338
煮たこ	39,504 83,997,190 2,126	3,134 6,707,566 2,140	3,223 6,358,475 1,973	3,401 7,173,110 2,109	3,170 6,868,163 2,167	3,208 6,961,348 2,170	3,353 7,222,357 2,154	3,666 7,813,897 2,131	4,141 7,483,132 1,807	3,008 6,670,373 2,218	2,907 6,444,438 2,217	2,553 5,773,286 2,261	3,740 8,521,045 2,278
なまり	11,168 9,471,962 848	803 679,055 846	1,928 1,681,446 872	2,664 2,499,219 938	2,389 1,814,339 759	1,491 1,047,045 702	801 660,408 824	404 354,570 878	195 211,037 1,082	187 171,869 919	136 162,330 1,194	91 109,974 1,209	79 80,670 1,021
ちりめん	166,635 272,993,699 1,638	11,567 13,673,178 1,182	12,224 16,131,045 1,320	12,814 17,299,562 1,350	15,796 23,018,118 1,457	15,339 24,034,767 1,567	20,144 27,731,987 1,377	19,566 27,642,310 1,413	14,276 21,936,684 1,537	16,458 27,141,251 1,649	13,654 30,442,576 2,230	8,290 24,053,613 2,902	6,507 19,888,608 3,056
練り製品	1,157,065 740,943,304 640	95,207 59,891,881 629	94,526 60,132,264 636	97,509 59,981,826 615	92,324 57,788,505 626	93,516 58,856,656 629	90,355 56,624,239 627	89,650 55,104,419 615	86,256 53,290,465 618	94,373 59,003,114 625	101,319 65,654,655 648	95,164 63,714,848 670	126,866 90,900,432 717
その他塩干品	1,960,819 1,384,837,853 706	161,295 97,559,914 605	161,033 99,561,135 618	206,906 140,103,608 677	206,223 126,603,946 614	167,327 111,458,728 666	150,718 94,593,386 628	145,429 96,302,940 662	153,837 101,710,462 661	151,384 102,183,393 675	138,046 105,361,199 763	143,006 118,298,949 827	175,615 191,100,193 1,088