

### Ⅲ 水産物部

# 入 荷 概 況 表

令和5年	1月	2月	3月	4月	5月	6月
開市日数	20	19	22	20	21	22
合計	694,488	678,692	733,329	753,548	788,114	753,462
	838,775,313	781,069,124	894,269,709	852,525,632	901,289,650	844,129,254
平均単価	1,208	1,151	1,219	1,131	1,144	1,120
1日平均取扱量	34,724	35,721	33,333	37,677	37,529	34,248
	41,938,766	41,108,901	40,648,623	42,626,282	42,918,555	38,369,512
鮮魚	283,252	277,225	317,411	321,726	355,077	332,612
	413,644,212	386,607,958	434,934,518	410,080,132	457,862,456	411,606,357
平均単価	1,460	1,395	1,370	1,275	1,289	1,237
冷凍	120,202	106,279	80,291	106,705	112,252	109,229
	181,012,514	155,483,225	176,115,271	169,947,899	174,444,745	163,670,541
平均単価	1,506	1,463	2,193	1,593	1,554	1,498
加工水産物	291,034	295,188	335,627	325,117	320,785	311,621
	244,118,587	238,977,941	283,219,920	272,497,601	268,982,449	268,852,356
平均単価	839	810	844	838	839	863

日数：日  
 上段 数量：kg  
 下段 金額：円  
 単価：円/kg  
 (税込み)

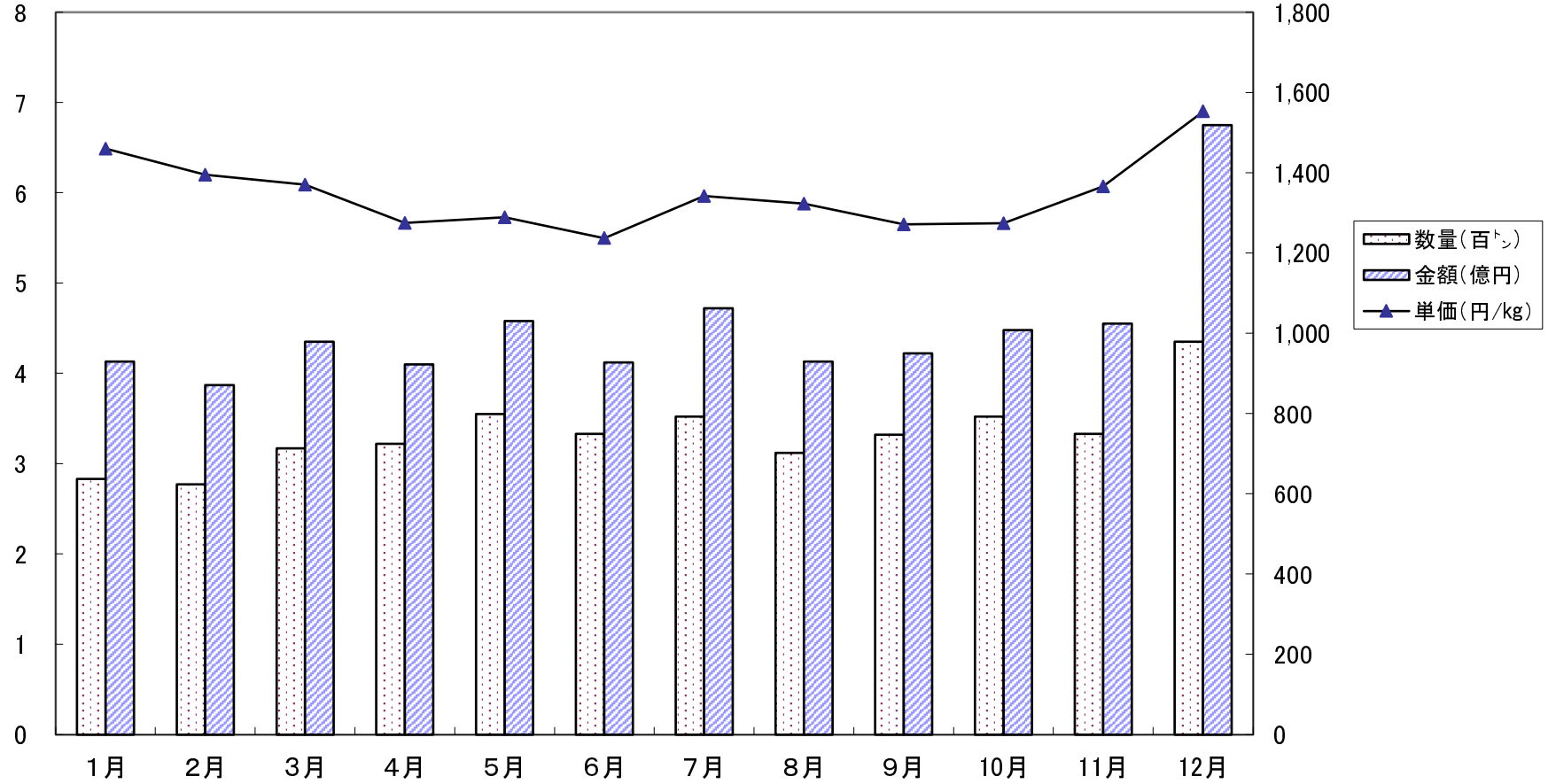
	7月	8月	9月	10月	11月	12月	合計
開市日数	21	21	21	22	21	23	253
合計	754,116	711,550	736,476	727,710	745,165	1,014,340	9,090,990
	919,020,211	849,274,237	850,394,438	885,875,058	915,959,084	1,452,769,451	10,985,351,161
平均単価	1,219	1,194	1,155	1,217	1,229	1,432	1,208
1日平均取扱量	35,910	33,883	35,070	33,078	35,484	44,102	35,933
	43,762,867	40,441,630	40,494,973	40,267,048	43,617,099	63,163,889	43,420,360
鮮魚	351,862	311,979	332,210	352,035	333,189	434,550	4,003,128
	472,228,348	412,708,897	422,123,896	448,432,363	455,102,316	674,729,304	5,400,060,757
平均単価	1,342	1,323	1,271	1,274	1,366	1,553	1,349
冷凍	117,591	115,779	110,566	73,409	117,302	200,132	1,369,737
	196,276,340	181,846,642	168,013,011	172,479,263	182,845,727	335,194,522	2,257,329,700
平均単価	1,669	1,571	1,520	2,350	1,559	1,675	1,648
加工水産物	284,663	283,792	293,700	302,266	294,674	379,658	3,718,125
	250,515,523	254,718,698	260,257,531	264,963,432	278,011,041	442,845,625	3,327,960,704
平均単価	880	898	886	877	943	1,166	895

月 別 ・ 種 類 別 取 扱 高

鮮 魚

(数量, 金額)

(単価)

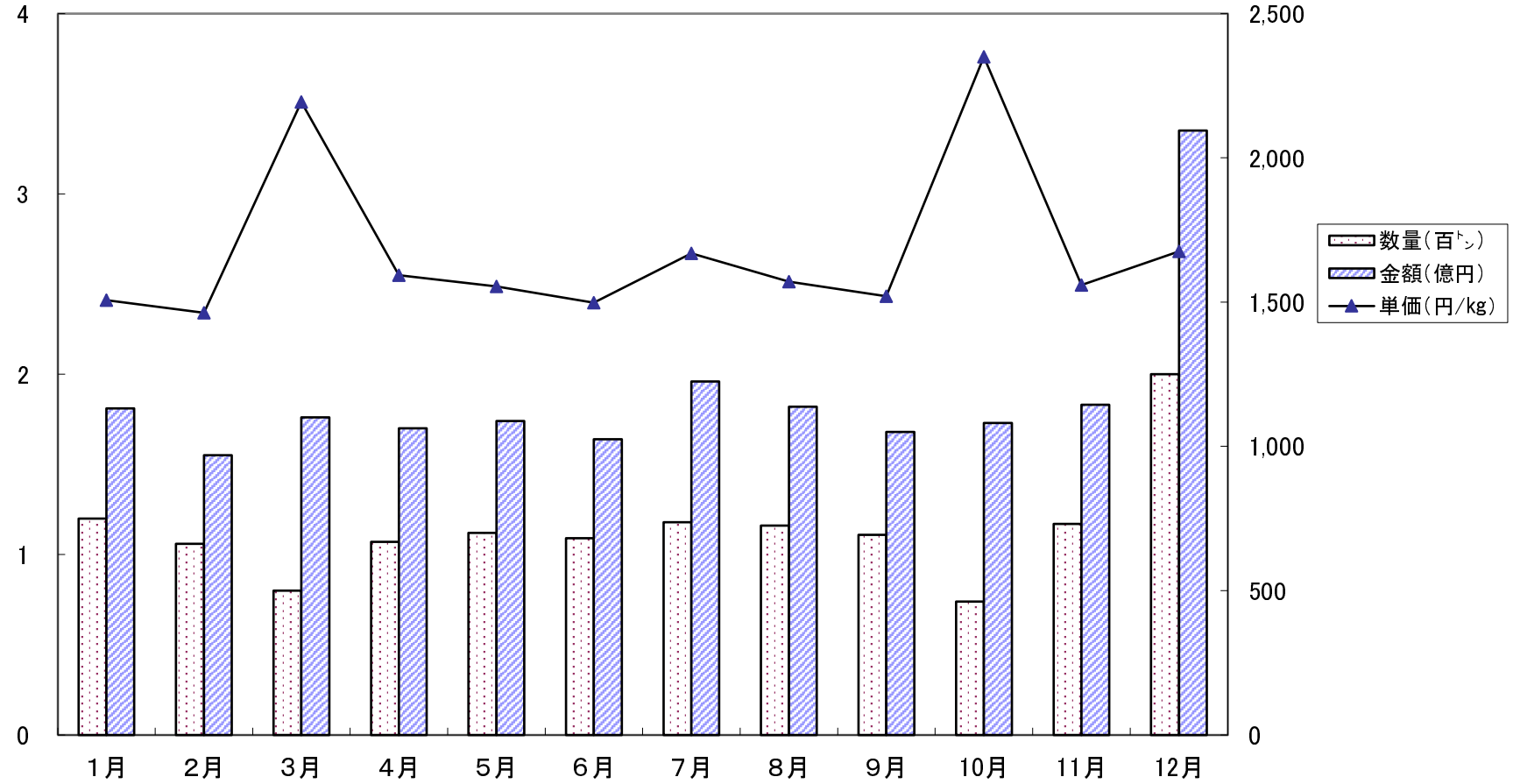


月 別 ・ 種 類 別 取 扱 高

冷 凍

(数量, 金額)

(単価)

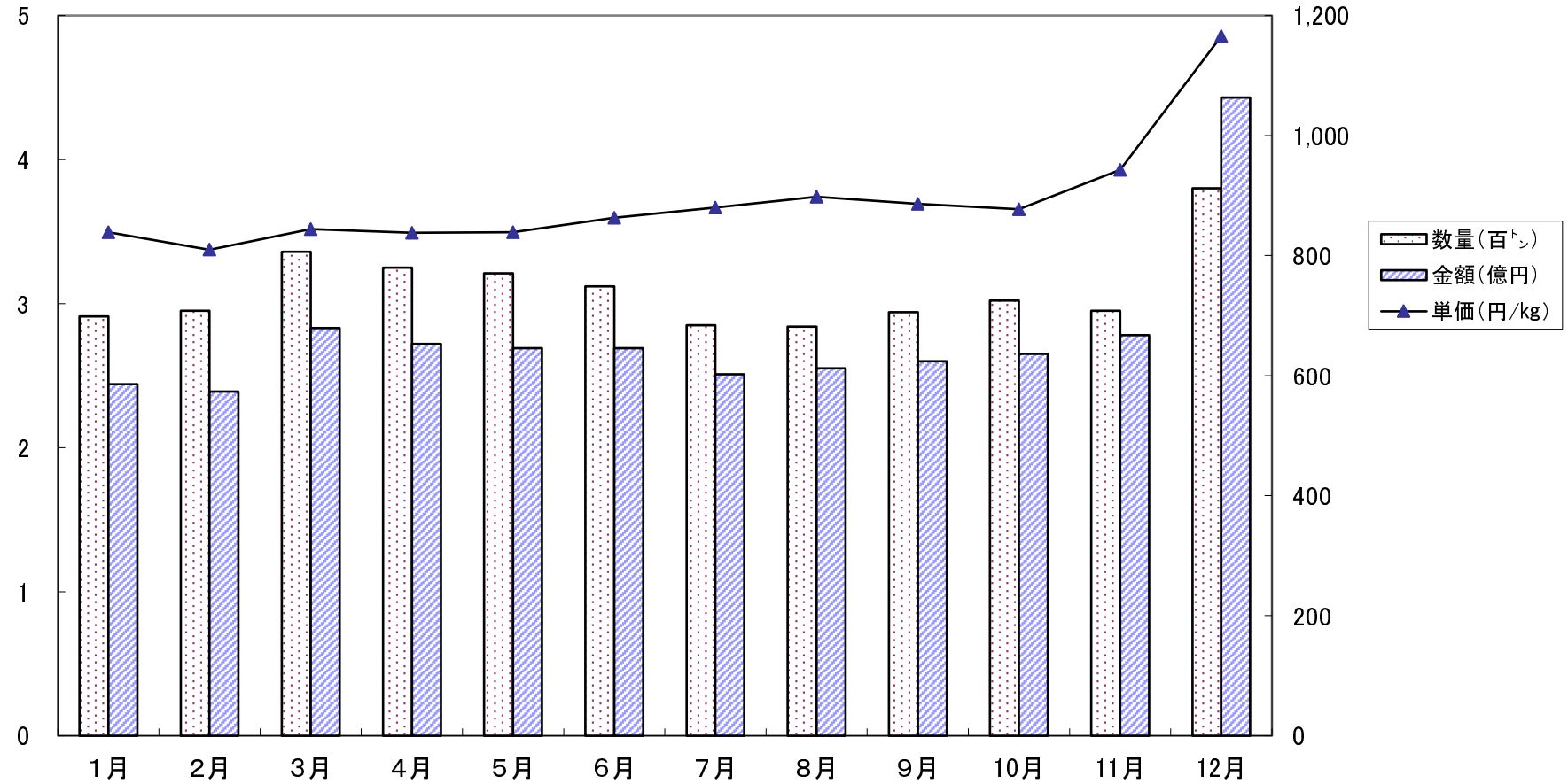


月 別 ・ 種 類 別 取 扱 高

### 加工水産物

(数量, 金額)

(単価)



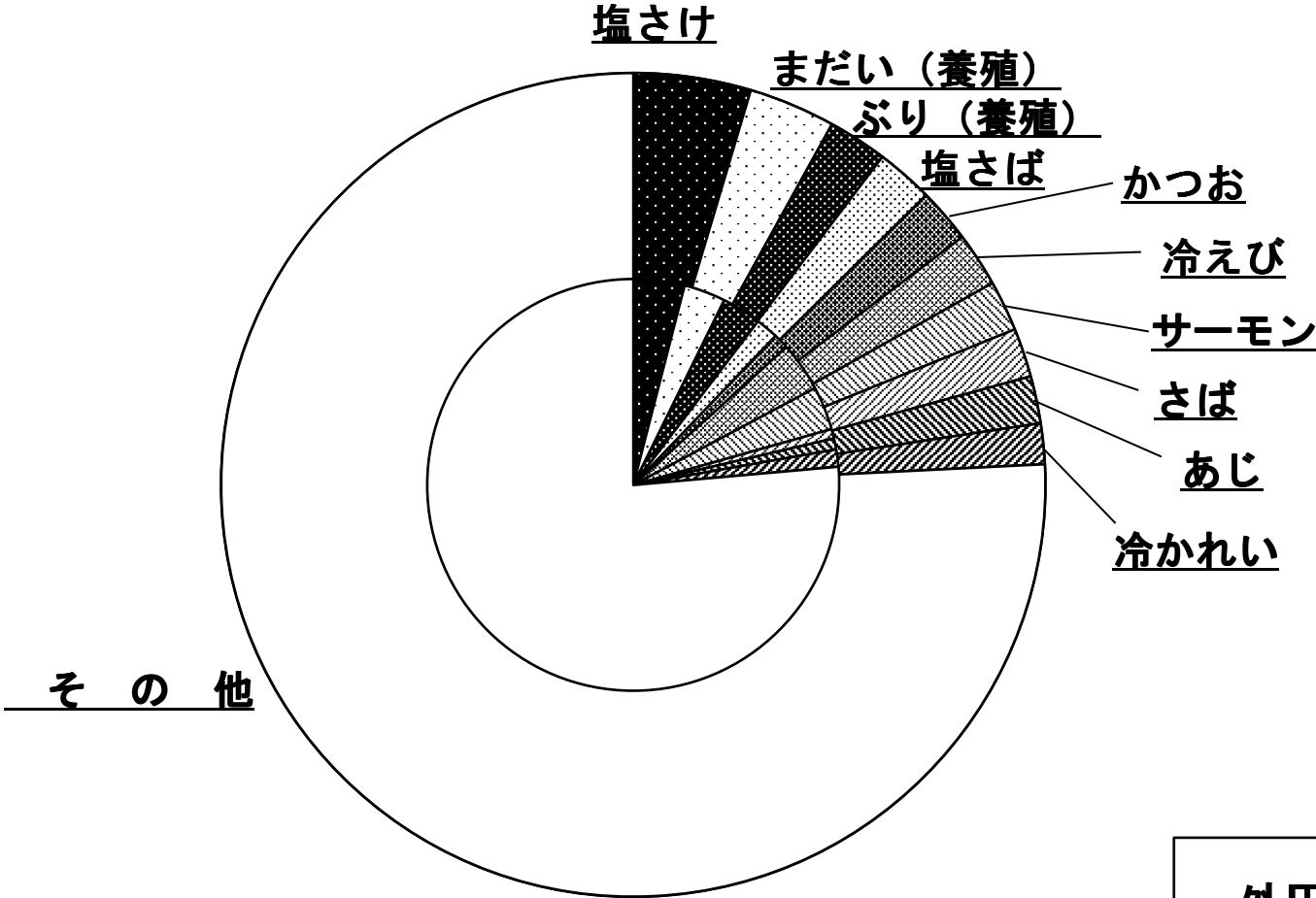
品 目 別 取 扱 量 の 順 位

(水産物)

数量=kg 金額=円 割合=%

区分 順位	品 目	数 量	割 合	金 額	割 合
1	塩さけ	418,468	4.6	440,828,989	4.0
2	まだい(養殖)	310,002	3.4	359,602,098	3.3
3	ぶり(養殖)	210,979	2.3	337,692,385	3.1
4	塩さば	204,062	2.2	195,088,593	1.8
5	かつお	195,093	2.1	132,121,239	1.2
6	冷えび	192,972	2.1	424,590,405	3.9
7	サーモン	181,248	2.0	375,980,204	3.4
8	さば	173,657	1.9	81,291,994	0.7
9	あじ	168,356	1.9	95,910,261	0.9
10	冷かれい	145,478	1.6	147,472,030	1.3
	そ の 他	6,890,675	75.9	8,394,772,963	76.4
	合 計	9,090,990	100.0	10,985,351,161	100.0

# 水産物一品目別の割合



外円:数量  
内円:金額

品 目 別 ・ 月 別 取 扱 高

(鮮 魚)

上段 数量 : kg 中段 金額 : 円 下段 単価 : 円/kg

品目	合計	1月	2月	3月	4月	5月	6月	7月	8月	9月	10月	11月	12月
くろまぐろ	101,747	7,085	6,419	7,208	7,584	8,851	8,719	7,909	8,001	8,078	9,516	10,042	12,335
	448,225,483	33,248,914	29,050,933	32,729,812	34,171,882	38,763,517	35,689,301	32,917,343	36,334,845	35,488,575	39,182,966	41,493,853	59,153,542
	4,405	4,693	4,526	4,541	4,506	4,380	4,093	4,162	4,541	4,393	4,118	4,132	4,796
きわだ	52,717	4,071	3,692	5,403	4,091	5,997	5,562	4,605	4,159	4,390	3,498	3,610	3,639
	96,784,189	7,970,338	7,358,148	9,787,252	8,852,019	10,187,302	8,814,778	7,310,236	8,139,162	7,005,489	5,870,761	6,957,495	8,531,209
	1,836	1,958	1,993	1,811	2,164	1,699	1,585	1,587	1,957	1,596	1,678	1,927	2,344
その他まぐろ	13,059	850	458	606	663	527	1,788	1,193	655	751	1,370	1,936	2,262
	33,245,963	2,186,042	1,152,815	1,463,232	1,688,707	1,333,006	2,977,546	2,124,379	1,502,863	1,582,084	3,388,551	6,339,897	7,506,841
	2,546	2,572	2,517	2,415	2,547	2,529	1,665	1,781	2,294	2,107	2,473	3,275	3,319
かつお	195,093	1,501	2,523	13,862	19,890	27,117	26,114	25,906	24,440	22,311	19,654	9,372	2,403
	132,121,239	1,854,351	2,781,870	10,182,966	13,868,911	17,778,243	15,085,240	15,277,659	15,437,867	16,000,565	13,368,161	7,734,840	2,750,566
	677	1,235	1,103	735	697	656	578	590	632	717	680	825	1,145
サーモン	181,248	13,334	13,641	14,652	13,150	13,675	12,104	12,571	16,704	16,527	16,106	15,807	22,977
	375,980,204	26,708,087	29,446,195	35,069,397	28,703,312	31,462,270	27,163,466	27,851,861	33,289,564	30,653,762	30,898,705	30,356,027	44,377,558
	2,074	2,003	2,159	2,393	2,183	2,301	2,244	2,216	1,993	1,855	1,918	1,920	1,931
いわし	107,603	7,851	13,299	14,166	12,929	8,480	11,774	7,750	8,182	7,799	7,102	5,344	2,927
	42,840,136	3,568,611	4,682,681	4,466,864	4,163,563	3,171,741	4,545,202	3,978,447	3,396,666	3,803,037	2,917,441	2,683,697	1,462,186
	398	455	352	315	322	374	386	513	415	488	411	502	500
あじ	168,356	9,473	11,481	10,814	16,554	12,259	17,214	40,298	8,793	9,449	13,659	9,340	9,022
	95,910,261	6,503,592	7,964,116	6,115,663	11,003,620	8,074,085	10,227,864	11,229,907	7,418,363	8,102,696	9,442,592	5,949,935	3,877,828
	570	687	694	566	665	659	594	279	844	858	691	637	430
さば	173,657	11,379	14,420	15,911	15,247	15,635	15,633	14,223	14,287	15,204	16,207	12,215	13,296
	81,291,994	6,264,996	7,104,293	7,334,849	6,169,474	6,645,558	5,984,639	5,942,358	5,990,140	7,671,924	7,761,981	7,127,433	7,294,349
	468	551	493	461	405	425	383	418	419	505	479	583	549
ぶり (天然)	113,585	3,553	6,562	14,960	23,315	14,969	8,354	7,968	3,699	7,177	11,489	5,504	6,035
	65,528,624	3,423,706	5,519,728	10,211,856	10,388,847	6,104,034	3,011,408	3,422,322	1,593,376	3,869,615	6,330,736	5,515,677	6,137,319
	577	964	841	683	446	408	360	430	431	539	551	1,002	1,017
ぶり (養殖)	210,979	22,577	17,783	14,091	8,437	9,683	10,007	10,450	12,394	13,311	14,984	20,342	56,920
	337,692,385	43,798,086	34,346,962	26,564,229	15,475,700	16,007,207	16,544,394	16,827,891	18,748,324	19,321,323	21,523,602	29,243,613	79,291,054
	1,601	1,940	1,931	1,885	1,834	1,653	1,653	1,610	1,513	1,452	1,436	1,438	1,393
はまち (天然)	99,937	4,051	5,566	7,524	5,794	6,162	6,109	7,575	10,840	13,815	16,048	10,891	5,562
	48,688,761	1,588,300	2,046,916	3,070,547	2,971,105	3,569,245	2,542,432	3,921,894	6,354,902	7,254,286	7,224,299	5,463,680	2,681,155
	487	392	368	408	513	579	416	518	586	525	450	502	482
はまち (養殖)	16,971	1,455	769	1,339	1,650	1,251	1,153	1,056	1,717	1,303	1,696	1,562	2,020
	22,564,568	2,236,152	1,163,711	1,963,437	2,364,944	1,775,521	1,532,695	1,394,716	2,211,820	1,625,982	2,093,006	1,852,750	2,349,834
	1,330	1,537	1,513	1,466	1,433	1,419	1,329	1,321	1,288	1,248	1,234	1,186	1,163
かんばち (天然)	22,249	904	124	885	1,084	2,133	2,575	1,882	1,199	2,101	2,795	3,769	2,798
	21,464,803	941,200	166,347	795,016	996,409	2,104,708	2,323,926	2,283,580	1,538,036	2,041,007	2,661,947	3,368,280	2,244,347
	965	1,041	1,342	898	919	987	902	1,213	1,283	971	952	894	802
かんばち (養殖)	121,097	10,153	8,074	9,991	9,238	11,742	10,357	10,692	10,851	10,043	9,966	9,498	10,492
	211,491,557	17,778,318	13,985,974	17,485,119	16,141,643	20,558,937	18,102,122	18,686,041	18,966,871	17,501,481	17,437,364	16,556,182	18,291,505
	1,746	1,751	1,732	1,750	1,747	1,751	1,748	1,748	1,748	1,743	1,750	1,743	1,743
ひらめ	42,539	3,463	2,500	3,036	3,289	4,626	6,313	3,499	2,725	2,215	2,812	4,522	3,539
	82,445,774	7,391,652	5,344,364	6,934,761	6,514,580	7,987,466	8,835,367	6,669,109	6,288,120	5,215,852	6,078,111	7,472,858	7,713,534
	1,938	2,134	2,138	2,284	1,981	1,727	1,400	1,906	2,308	2,355	2,161	1,653	2,180



品 目 別 ・ 月 別 取 扱 高

(鮮 魚)

上段 数量 : kg 中段 金額 : 円 下段 単価 : 円/kg

品目	合計	1月	2月	3月	4月	5月	6月	7月	8月	9月	10月	11月	12月
たら	87,551 99,288,996 1,134	14,908 15,263,755 1,024	13,133 12,367,520 942	6,009 8,584,576 1,429	4,973 6,340,156 1,275	4,577 5,978,528 1,306	2,742 4,314,329 1,573	2,044 3,831,830 1,875	1,140 1,917,846 1,682	1,265 2,052,433 1,622	4,723 7,206,292 1,526	12,744 13,836,181 1,086	19,293 17,595,550 912
はも	131,842 115,397,821 875	3,321 1,773,350 534	2,764 1,680,617 608	2,802 2,228,926 795	5,867 4,659,726 794	13,084 12,051,009 921	20,750 19,490,908 939	25,441 25,947,967 1,020	23,328 23,548,789 1,009	14,813 11,796,359 796	10,016 6,681,896 667	7,329 4,291,759 586	2,327 1,246,515 536
まだい(天然)	141,625 121,059,949 855	6,979 7,189,682 1,030	7,604 8,155,402 1,073	11,600 11,369,204 980	18,894 16,155,663 855	17,838 13,186,945 739	15,622 10,901,806 698	12,008 9,697,771 808	11,064 8,619,434 779	10,992 8,740,400 795	10,618 9,174,811 864	8,658 8,148,492 941	9,748 9,720,339 997
まだい(養殖)	310,002 359,602,098 1,160	28,778 32,718,051 1,137	21,546 24,384,827 1,132	25,376 29,052,548 1,145	22,823 25,935,724 1,136	27,087 31,015,274 1,145	21,673 24,651,936 1,137	22,124 25,240,267 1,141	26,071 29,903,315 1,147	24,669 28,630,588 1,161	26,003 30,920,046 1,189	26,104 31,503,833 1,207	37,748 45,645,689 1,209
れんこだい	23,384 16,463,559 704	1,318 970,867 737	1,538 1,403,396 912	1,772 1,404,366 793	1,965 1,733,521 882	1,702 1,187,968 698	866 597,849 690	951 628,696 661	1,106 800,213 724	2,506 1,674,623 668	2,436 1,721,895 707	2,450 1,505,405 614	4,774 2,834,760 594
さわら	61,959 82,901,996 1,338	4,545 6,357,616 1,399	4,392 5,858,115 1,334	4,946 8,617,868 1,742	7,781 9,938,917 1,277	6,610 9,022,005 1,365	3,406 5,013,365 1,472	2,209 3,487,602 1,579	3,371 4,665,855 1,384	5,586 7,010,828 1,255	7,345 8,142,278 1,109	5,010 6,500,994 1,298	6,758 8,286,553 1,226
いとより	11,426 10,204,952 893	924 776,704 841	644 594,671 923	952 929,410 976	728 552,137 758	816 700,701 859	1,830 1,502,383 821	638 681,112 1,068	965 839,589 870	1,548 1,377,673 890	877 819,407 934	757 754,240 996	747 676,925 906
ふぐ	40,444 116,367,632 2,877	6,255 19,310,626 3,087	3,583 10,775,477 3,007	3,664 6,081,049 1,660	2,336 2,395,960 1,026	1,601 1,797,835 1,123	861 854,630 993	327 709,724 2,170	409 1,041,004 2,545	514 1,714,521 3,336	1,567 4,218,219 2,692	2,961 10,073,579 3,402	16,366 57,395,008 3,507
さんま	53,385 51,706,825 969	775 626,832 809	405 328,860 812	495 399,276 807	500 406,728 813	609 554,904 911	404 410,724 1,017	480 486,324 1,013	1,790 1,981,992 1,107	19,252 17,650,455 917	16,225 17,836,585 1,099	9,814 8,984,069 915	2,636 2,040,076 774
たちうお	10,205 20,246,490 1,984	1,619 2,214,454 1,368	772 1,621,383 2,100	719 1,583,265 2,202	592 1,177,608 1,989	1,021 2,158,021 2,114	967 2,154,314 2,228	568 1,634,026 2,877	452 1,170,967 2,591	436 1,203,345 2,760	1,294 1,934,434 1,495	905 1,886,504 2,085	860 1,508,169 1,754
あゆ	29,334 41,806,958 1,425	32 32,000 1,000	129 128,500 996	629 843,300 1,341	2,345 3,954,109 1,686	3,810 5,668,984 1,488	5,532 6,979,965 1,262	5,467 7,159,254 1,310	5,214 7,017,690 1,346	2,218 3,551,268 1,601	1,888 3,137,448 1,662	1,096 1,425,320 1,300	974 1,909,120 1,960
うなぎ	44,588 193,973,636 4,350	2,386 6,944,990 2,911	2,505 9,967,169 3,979	2,731 11,335,326 4,151	3,365 14,401,349 4,280	3,764 15,027,742 3,992	2,966 12,151,337 4,097	14,862 70,799,368 4,764	2,473 11,848,558 4,791	2,508 10,984,191 4,380	2,283 9,430,817 4,131	1,732 7,774,729 4,489	3,013 13,308,060 4,417
けんいか	22,727 56,592,509 2,490	0 0 4,444	45 200,000 4,444	472 1,680,716 3,561	1,699 5,273,553 3,104	4,494 10,118,776 2,252	3,880 9,035,195 2,329	4,155 9,888,879 2,380	2,494 6,251,921 2,507	2,634 6,695,085 2,542	1,618 3,854,866 2,382	793 2,459,852 3,102	443 1,133,666 2,559
するめいか	34,649 34,121,555 985	2,392 2,538,212 1,061	4,107 4,171,410 1,016	5,200 4,747,628 913	3,622 3,651,472 1,008	3,469 3,651,280 1,053	4,560 4,298,401 943	1,634 1,776,160 1,087	1,206 1,300,995 1,079	3,850 3,550,593 922	3,704 3,479,684 939	182 229,852 1,263	723 725,868 1,004
たこ	28,808 66,260,970 2,300	1,457 3,493,760 2,398	1,347 3,242,166 2,407	1,597 4,121,362 2,581	1,704 4,544,530 2,667	3,108 7,238,737 2,329	2,942 6,325,627 2,150	3,912 8,123,688 2,077	3,581 8,113,893 2,266	2,140 4,915,540 2,297	2,270 5,046,729 2,223	2,105 5,065,326 2,406	2,645 6,029,612 2,280

品 目 別 ・ 月 別 取 扱 高

(鮮 魚)

上段 数量 : kg 中段 金額 : 円 下段 単価 : 円/kg

品目	合計	1月	2月	3月	4月	5月	6月	7月	8月	9月	10月	11月	12月
うに	5,362	293	346	456	524	515	453	488	503	399	410	389	586
	93,204,337	5,101,635	5,950,890	8,884,354	8,343,825	8,946,718	7,563,012	8,052,302	8,343,260	6,591,160	7,583,857	7,422,238	10,421,086
	17,382	17,412	17,199	19,483	15,923	17,372	16,695	16,501	16,587	16,519	18,497	19,080	17,783
あわび	11,971	530	649	927	886	1,009	897	1,077	1,090	1,023	888	1,078	1,917
	65,765,361	2,543,457	3,460,200	4,845,346	5,006,500	5,848,449	5,605,959	6,990,613	6,014,069	6,219,715	4,980,596	4,825,648	9,424,809
	5,494	4,799	5,332	5,227	5,651	5,796	6,250	6,491	5,517	6,080	5,609	4,476	4,916
あさり	27,894	1,701	2,326	2,969	2,930	2,955	2,886	2,183	1,626	2,170	2,141	2,043	1,964
	27,817,892	1,606,518	2,258,560	2,971,691	3,129,798	3,086,000	2,876,591	2,299,291	1,596,919	2,087,286	2,012,849	2,028,664	1,863,725
	997	944	971	1,001	1,068	1,044	997	1,053	982	962	940	993	949
ほたて貝柱	23,840	1,277	1,611	2,039	1,909	1,878	2,069	2,100	2,260	2,279	2,120	2,022	2,276
	107,295,017	6,414,636	7,952,002	9,845,719	9,215,557	9,101,418	9,109,855	9,333,556	9,462,137	9,443,256	8,829,298	8,441,866	10,145,717
	4,501	5,023	4,936	4,829	4,827	4,846	4,403	4,445	4,187	4,144	4,165	4,175	4,458
かき	85,450	13,026	11,204	8,334	2,224	2,554	2,380	4,120	3,496	2,906	7,904	11,294	16,008
	127,697,850	21,210,842	18,186,374	12,558,082	2,875,242	3,375,130	2,857,147	4,227,993	3,955,781	2,909,653	11,574,844	18,254,499	25,712,263
	1,494	1,628	1,623	1,507	1,293	1,322	1,200	1,026	1,132	1,001	1,464	1,616	1,606
すけそうこ	9,432	593	326	626	82	0	0	0	0	0	999	1,920	4,886
	15,786,307	966,900	599,708	876,312	119,880	0	0	0	0	0	1,853,592	2,910,952	8,458,963
	1,674	1,631	1,840	1,400	1,462						1,855	1,516	1,731
その他鮮魚	1,186,413	88,443	88,938	98,648	91,062	109,469	91,150	87,497	89,694	94,028	97,804	108,049	141,631
	1,480,222,106	110,126,980	111,205,658	127,799,194	116,793,461	132,623,192	111,530,644	111,394,182	107,103,751	116,187,246	121,811,697	128,662,097	184,984,004
	1,248	1,245	1,250	1,296	1,283	1,212	1,224	1,273	1,194	1,236	1,245	1,191	1,306

品 目 別 ・ 月 別 取 扱 高

(冷 凍)

上段 数量 : kg 中段 金額 : 円 下段 単価 : 円/kg

品目	合計	1月	2月	3月	4月	5月	6月	7月	8月	9月	10月	11月	12月
冷くろまぐろ	25,756	1,688	1,268	1,005	1,366	1,146	1,001	2,124	2,427	3,474	2,019	1,961	6,277
	98,830,872	7,596,149	6,082,921	4,607,642	5,550,838	5,201,149	4,391,648	7,789,889	9,176,717	9,186,693	7,130,371	8,825,970	23,290,885
	3,837	4,500	4,797	4,585	4,064	4,539	4,387	3,668	3,781	2,644	3,532	4,501	3,711
冷きわだ	138,408	12,360	10,736	12,886	10,722	13,151	9,288	8,680	13,255	11,534	11,040	10,931	13,825
	193,225,694	17,217,867	15,038,942	18,213,409	15,424,382	18,409,936	12,667,941	12,182,236	18,517,701	15,843,945	15,470,477	15,022,875	19,215,983
	1,396	1,393	1,401	1,413	1,439	1,400	1,364	1,403	1,397	1,374	1,401	1,374	1,390
冷めばち	28,320	3,096	2,800	1,962	1,861	2,191	2,353	1,833	2,081	1,940	2,163	2,616	3,424
	60,492,931	5,706,723	5,860,152	4,293,667	4,462,956	4,846,967	5,055,494	4,022,012	4,474,831	4,190,560	4,711,698	5,531,195	7,336,676
	2,136	1,843	2,093	2,188	2,398	2,212	2,149	2,194	2,150	2,160	2,178	2,114	2,143
その他冷まぐろ	1,352	97	101	130	153	208	116	73	68	192	77	62	75
	3,974,778	209,930	345,665	221,918	563,323	429,754	452,359	194,086	203,537	711,855	232,524	145,573	264,254
	2,940	2,164	3,422	1,707	3,682	2,066	3,900	2,659	2,993	3,708	3,020	2,348	3,523
冷さけ	78,632	6,215	6,496	7,562	7,567	6,838	6,203	6,947	6,539	5,736	5,292	6,322	6,915
	118,155,303	10,524,751	10,518,091	11,600,567	10,908,460	9,999,427	9,379,968	9,852,232	9,866,054	8,567,578	7,740,615	9,067,215	10,130,345
	1,503	1,693	1,619	1,534	1,442	1,462	1,512	1,418	1,509	1,494	1,463	1,434	1,465
冷かれい	145,478	13,175	10,636	12,926	11,715	13,850	12,246	11,199	12,058	11,900	12,233	11,862	11,678
	147,472,030	13,112,021	10,969,637	13,176,118	12,021,618	13,731,334	12,280,178	11,510,397	12,458,532	12,278,955	12,401,198	11,906,294	11,625,748
	1,014	995	1,031	1,019	1,026	991	1,003	1,028	1,033	1,032	1,014	1,004	996
冷たら	6,529	1,406	486	443	429	422	350	413	406	554	437	570	613
	9,237,337	892,339	615,839	722,127	718,688	712,054	547,652	679,414	692,039	908,171	730,132	965,302	1,053,580
	1,415	635	1,267	1,630	1,675	1,687	1,565	1,645	1,705	1,639	1,671	1,694	1,719
冷うなぎ	18,079	854	1,080	1,033	1,411	1,363	1,832	3,959	1,623	1,538	1,402	1,009	975
	58,024,859	3,085,452	2,743,438	3,711,528	4,871,772	4,192,236	4,968,433	15,283,944	4,472,820	3,677,400	3,984,768	3,483,108	3,549,960
	3,210	3,613	2,540	3,593	3,453	3,076	2,712	3,861	2,756	2,391	2,842	3,452	3,641
冷えび	192,972	13,328	13,536	16,399	15,672	16,684	15,030	15,041	16,631	14,472	14,413	13,818	27,948
	424,590,405	30,878,760	29,015,129	34,351,172	33,925,303	34,452,611	31,216,304	32,436,150	36,653,010	32,116,827	31,582,969	31,299,111	66,663,059
	2,200	2,317	2,144	2,095	2,165	2,065	2,077	2,157	2,204	2,219	2,191	2,265	2,385
冷ずわいがこ	15,008	1,674	443	257	105	221	287	304	717	501	688	1,539	8,272
	53,652,941	10,527,819	1,428,916	1,170,012	387,988	290,350	399,500	508,000	961,600	850,144	1,405,872	4,396,730	31,326,010
	3,575	6,289	3,226	4,553	3,695	1,314	1,392	1,671	1,341	1,697	2,043	2,857	3,787
冷するめいか	2,034	186	164	143	405	119	138	258	130	243	48	176	24
	2,799,848	272,068	220,392	188,788	414,700	142,400	165,000	364,300	183,800	372,500	69,300	358,500	48,100
	1,377	1,463	1,344	1,320	1,024	1,197	1,196	1,412	1,414	1,533	1,444	2,037	2,004
冷もんごう	27,727	2,032	2,169	2,973	2,403	2,191	2,052	2,152	2,399	2,120	2,032	2,060	3,144
	83,079,884	5,866,745	6,344,295	8,831,144	7,117,386	6,436,110	5,754,032	6,174,131	7,199,596	6,428,196	6,433,251	6,592,623	9,902,375
	2,996	2,887	2,925	2,970	2,962	2,938	2,804	2,869	3,001	3,032	3,166	3,200	3,150
冷たこ	74,221	5,622	5,429	7,295	5,641	5,713	5,802	6,532	6,765	5,889	6,701	5,986	6,846
	105,981,904	7,291,386	7,317,381	11,647,028	8,125,272	8,199,256	8,033,843	9,216,928	9,560,263	8,392,440	9,618,968	8,640,412	9,938,727
	1,428	1,297	1,348	1,597	1,440	1,435	1,385	1,411	1,413	1,425	1,435	1,443	1,452
その他冷凍魚	615,221	58,469	50,935	15,277	47,255	48,155	52,531	58,076	50,680	50,473	14,864	58,390	110,116
	897,810,914	67,830,504	58,982,427	63,380,151	65,455,213	67,401,161	68,358,189	86,062,621	67,426,142	64,487,747	70,967,120	76,610,819	140,848,820
	1,459	1,160	1,158	4,149	1,385	1,400	1,301	1,482	1,330	1,278	4,774	1,312	1,279

品 目 別 ・ 月 別 取 扱 高

(加工水産物)

上段 数量 : kg 中段 金額 : 円 下段 単価 : 円/kg

品目	合計	1月	2月	3月	4月	5月	6月	7月	8月	9月	10月	11月	12月
塩さけ	418,468	31,463	28,459	39,544	36,744	35,541	37,931	34,544	33,844	35,399	35,601	35,007	34,391
	440,828,989	32,195,269	29,865,679	40,422,232	38,280,505	36,981,304	39,622,045	39,664,278	37,878,748	39,391,886	36,113,116	35,142,325	35,271,602
	1,053	1,023	1,049	1,022	1,042	1,041	1,045	1,148	1,119	1,113	1,014	1,004	1,026
塩さば	204,062	19,881	20,667	21,369	21,938	20,007	20,289	16,440	15,365	15,374	11,405	9,763	11,564
	195,088,593	15,332,542	16,408,047	17,542,556	18,266,319	17,727,710	18,042,189	15,312,576	15,079,168	15,835,873	15,016,713	13,953,629	16,571,271
	956	771	794	821	833	886	889	931	981	1,030	1,317	1,429	1,433
塩かずのこ	38,396	395	258	765	337	307	441	456	510	383	445	3,458	30,641
	125,989,718	928,019	602,986	2,573,542	709,900	504,939	759,987	864,261	853,480	765,470	873,796	18,381,009	98,172,329
	3,281	2,349	2,337	3,364	2,107	1,645	1,723	1,895	1,673	1,999	1,964	5,316	3,204
樺太ししゃも	48,836	4,731	3,806	4,238	3,802	4,841	4,304	3,786	4,136	4,509	3,863	4,370	2,450
	54,250,731	4,640,265	3,967,843	4,778,154	4,582,973	5,720,746	4,561,279	4,238,468	5,237,335	4,743,184	4,448,983	4,384,696	2,946,805
	1,111	981	1,043	1,127	1,205	1,182	1,060	1,120	1,266	1,052	1,152	1,003	1,203
たらこ・明太子	59,811	4,195	3,975	5,777	4,212	4,751	5,489	4,750	5,748	5,428	4,933	4,803	5,750
	108,905,316	7,180,476	7,143,261	11,218,006	7,731,669	8,597,453	9,055,636	9,172,948	9,562,156	9,624,051	8,969,876	8,424,279	12,225,505
	1,821	1,712	1,797	1,942	1,836	1,810	1,650	1,931	1,664	1,773	1,818	1,754	2,126
身欠にしん	4,155	188	274	221	267	275	438	318	275	534	379	388	598
	3,948,347	190,750	212,989	212,653	274,355	291,127	331,348	328,555	323,180	580,121	376,489	328,375	498,405
	950	1,015	777	962	1,028	1,059	757	1,033	1,175	1,086	993	846	833
棒だら	1,934	0	0	10	0	0	0	0	0	0	0	750	1,174
	11,074,277	0	0	62,640	0	0	0	0	0	0	0	4,447,440	6,564,197
	5,726			6,264								5,930	5,591
煮たこ	40,576	2,707	2,584	2,993	3,200	3,668	3,298	3,688	4,249	3,784	3,377	3,442	3,586
	84,627,959	6,050,082	5,716,145	6,653,066	6,734,696	6,894,846	6,844,567	7,591,822	8,292,961	7,777,077	7,017,157	6,898,778	8,156,762
	2,086	2,235	2,212	2,223	2,105	1,880	2,075	2,059	1,952	2,055	2,078	2,004	2,275
なまり(生利節)	8,567	590	908	1,565	2,061	1,498	730	365	255	210	195	110	80
	8,284,111	651,586	861,469	1,471,284	2,070,085	1,491,462	708,755	296,150	221,340	167,340	169,500	116,340	58,800
	967	1,104	949	940	1,004	996	971	811	868	797	869	1,058	735
ちりめん	126,241	6,490	8,230	8,977	7,148	7,939	12,960	11,272	12,855	12,355	14,898	12,229	10,888
	305,273,639	19,444,459	20,928,555	20,939,538	18,663,964	24,607,827	35,368,500	26,393,381	30,561,677	27,223,392	38,486,064	24,507,347	18,148,935
	2,418	2,996	2,543	2,333	2,611	3,100	2,729	2,341	2,377	2,203	2,583	2,004	1,667
練り製品	1,084,398	84,269	84,495	90,743	81,558	91,878	84,552	81,453	84,494	88,654	97,231	93,479	121,592
	734,287,813	58,143,598	56,109,841	58,520,310	54,356,866	61,029,478	56,687,653	55,224,261	53,657,685	59,972,782	66,560,835	64,371,904	89,652,600
	677	690	664	645	666	664	670	678	635	676	685	689	737
その他加工水産物	1,682,681	136,125	141,532	159,425	163,850	150,080	141,189	127,591	122,061	127,070	129,939	126,875	156,944
	1,255,401,211	99,361,541	97,161,126	118,825,939	120,826,269	105,135,557	96,870,397	91,428,823	93,050,968	94,176,355	86,930,903	97,054,919	154,578,414
	746	730	686	745	737	701	686	717	762	741	669	765	985