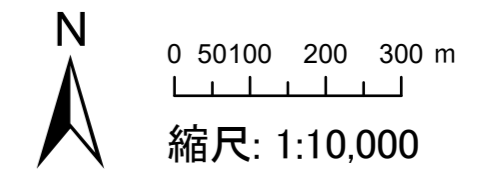
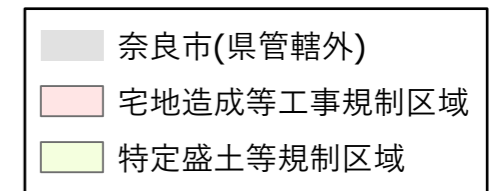
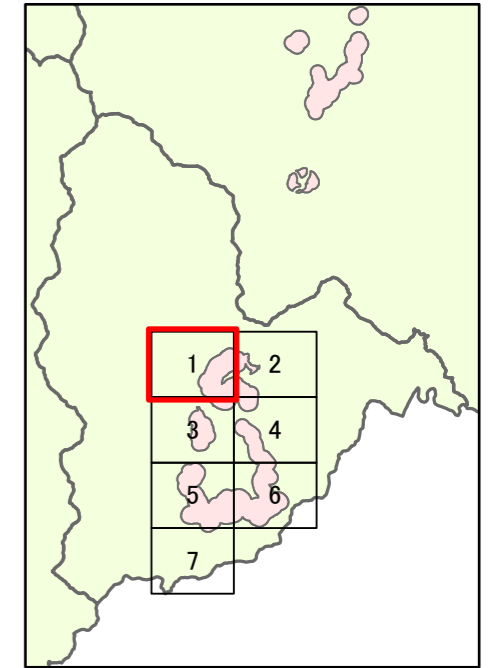
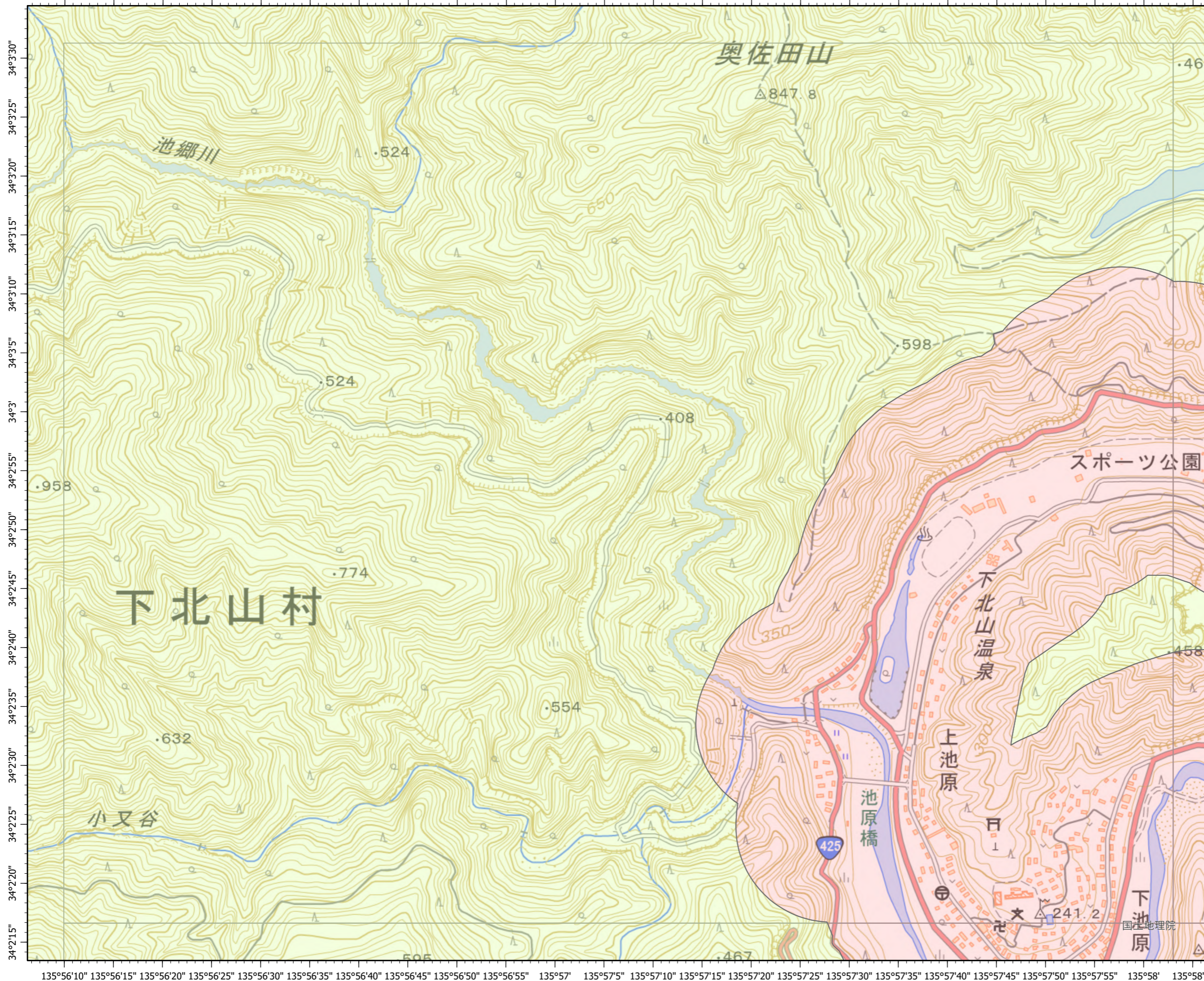


# 奈良県 宅地造成等工事規制区域・特定盛土等規制区域の候補区域

## 下北山村 1



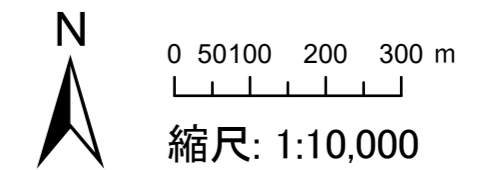
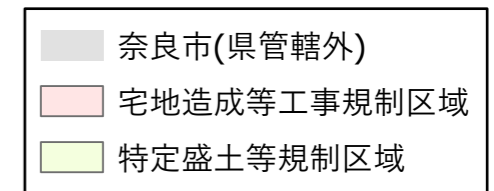
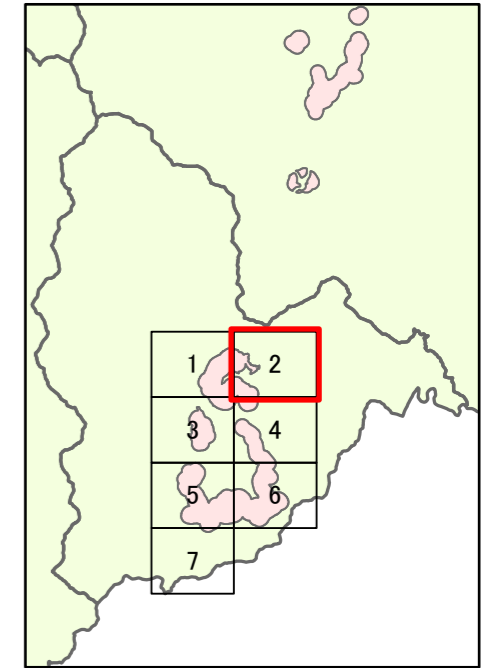
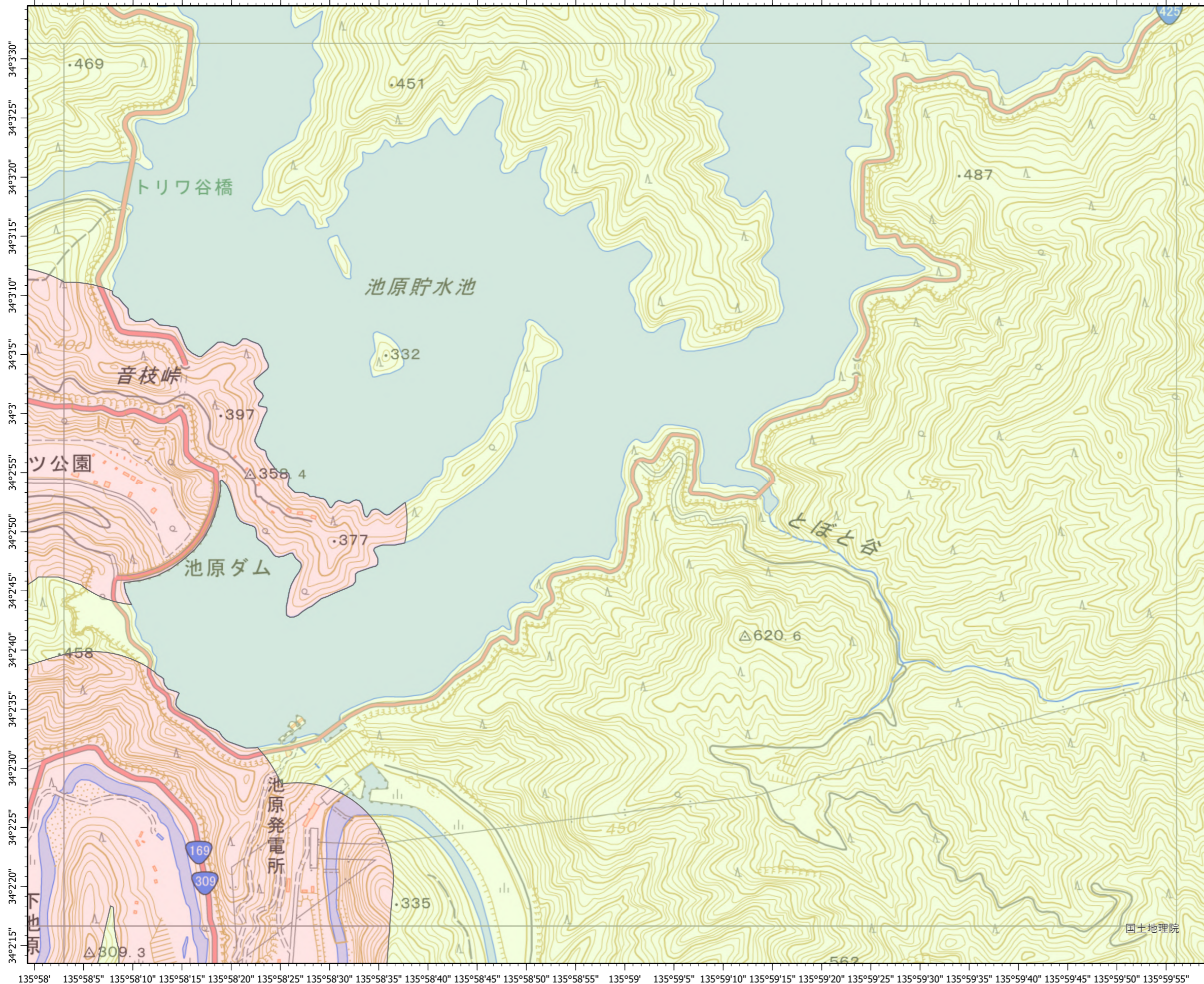
「測量法に基づく国土地理院長承認(使用) R 6JHs 129」

135°56'10" 135°56'15" 135°56'20" 135°56'25" 135°56'30" 135°56'35" 135°56'40" 135°56'45" 135°56'50" 135°56'55" 135°57' 135°57'5" 135°57'10" 135°57'15" 135°57'20" 135°57'25" 135°57'30" 135°57'35" 135°57'40" 135°57'45" 135°57'50" 135°57'55" 135°58' 135°58'5"



# 奈良県 宅地造成等工事規制区域・特定盛土等規制区域の候補区域

## 下北山村 2



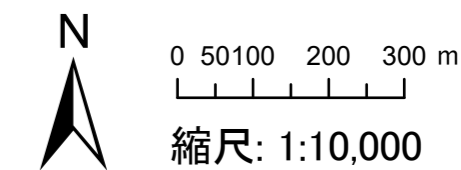
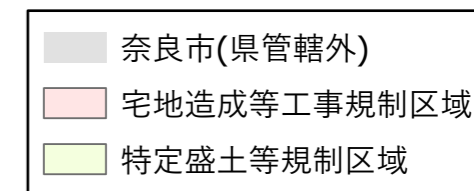
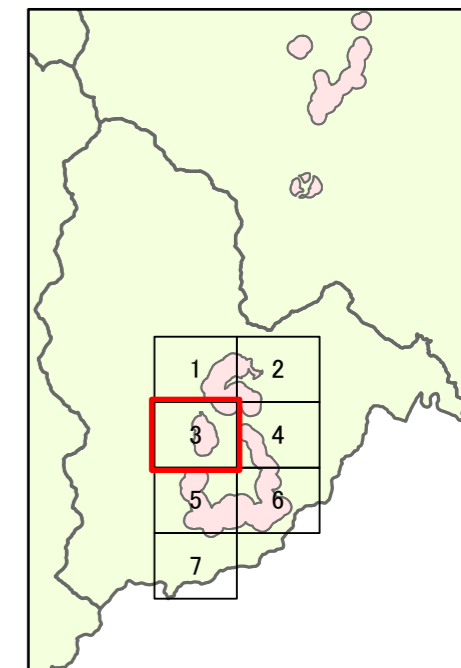
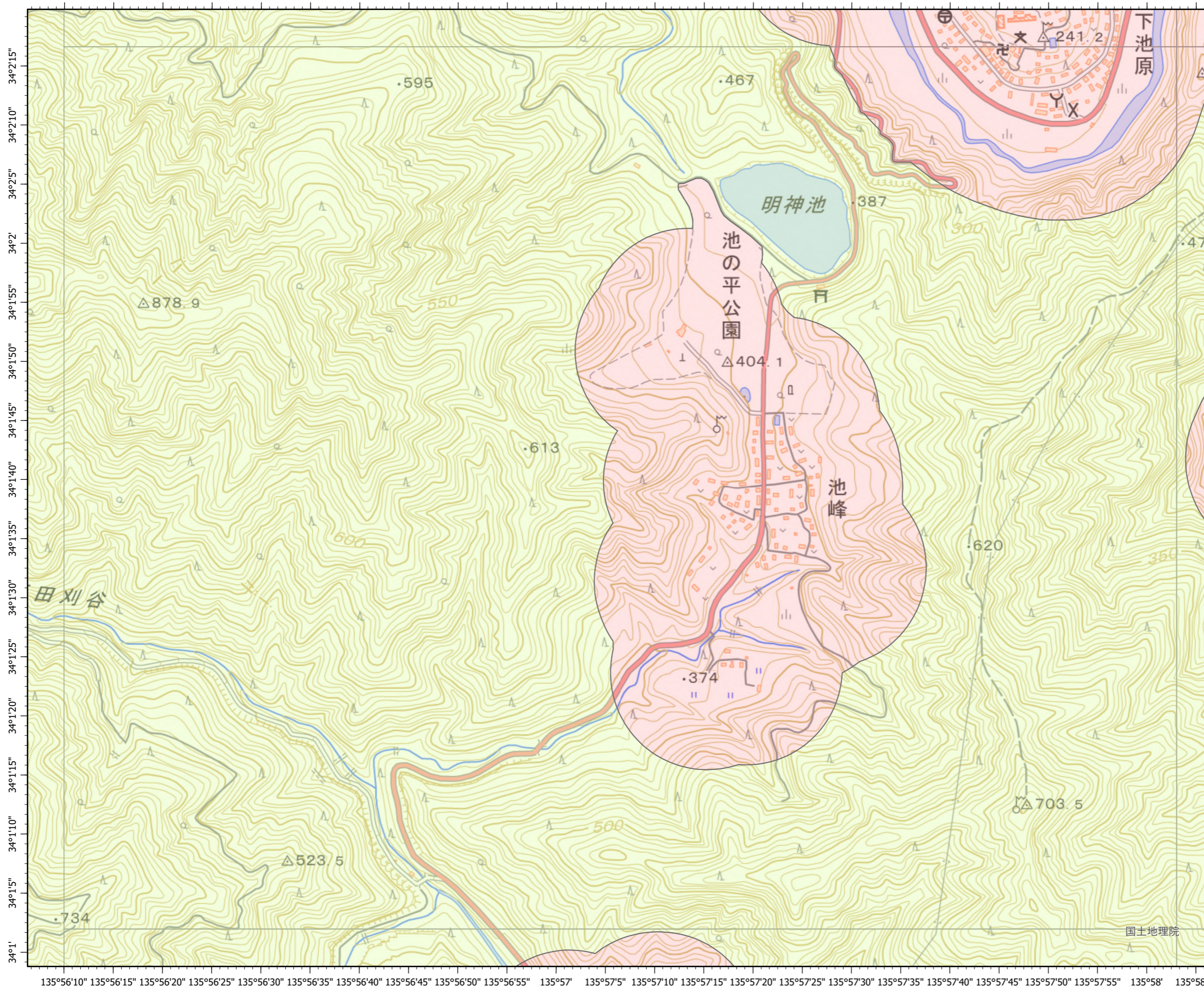
「測量法に基づく国土地理院長承認(使用) R 6JHs 129」

国土地理院



# 奈良県 宅地造成等工事規制区域・特定盛土等規制区域の候補区域

## 下北山村 3



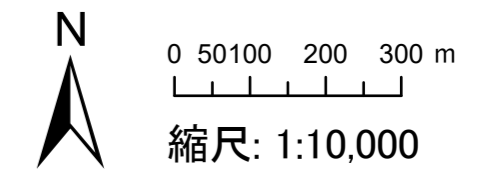
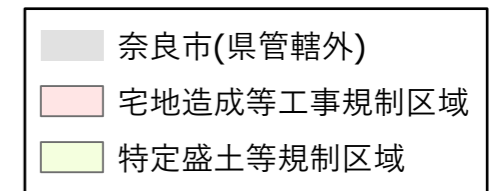
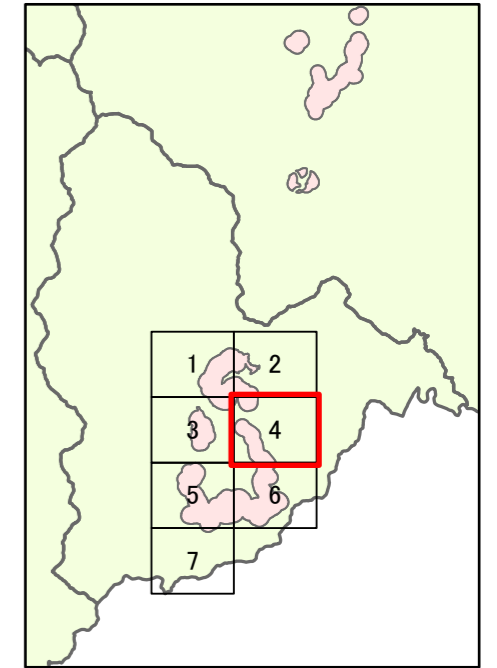
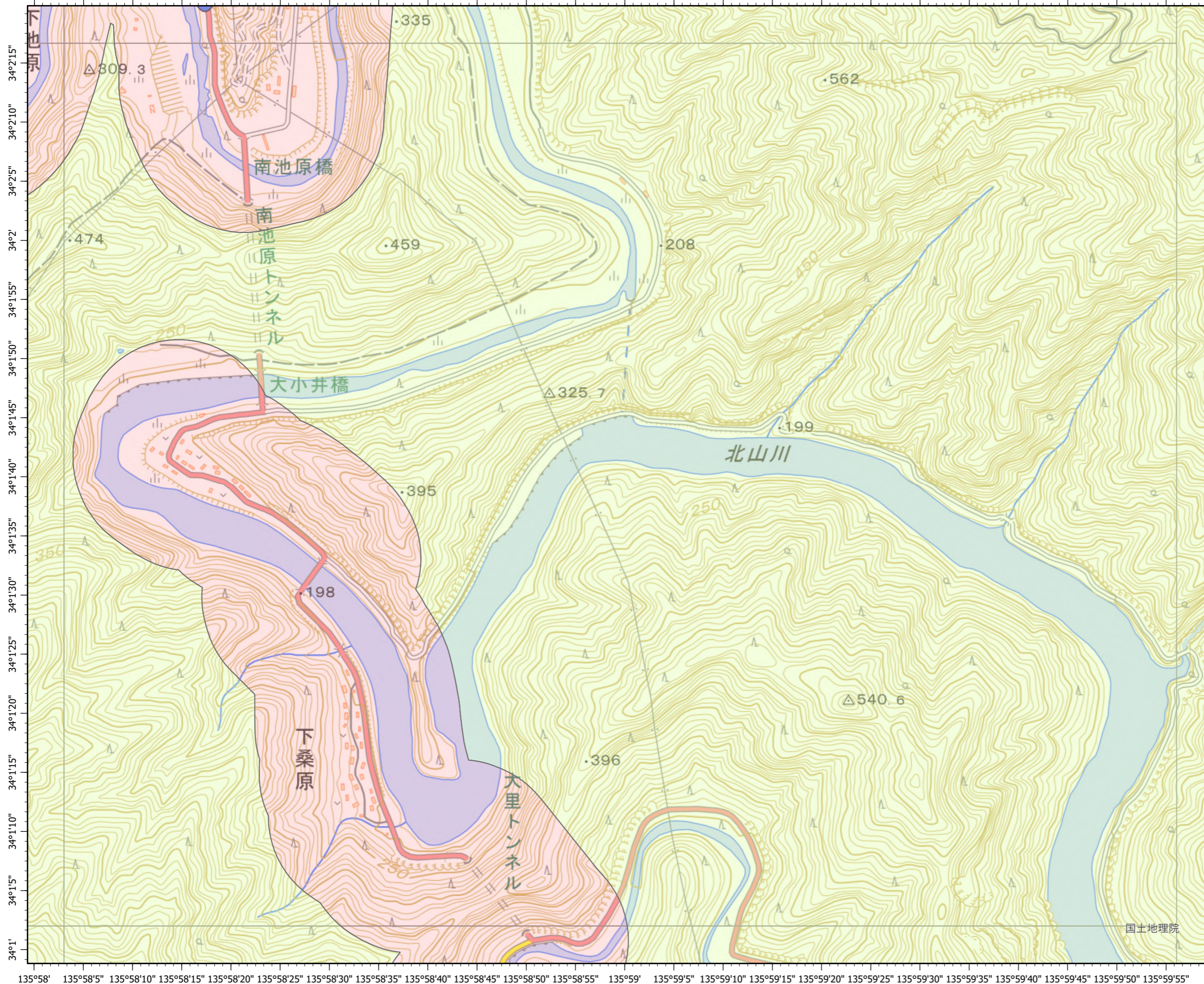
「測量法に基づく国土地理院長承認(使用) R 6JHs 129」

135°56'10" 135°56'15" 135°56'20" 135°56'25" 135°56'30" 135°56'35" 135°56'40" 135°56'45" 135°56'50" 135°56'55" 135°57' 135°57'5" 135°57'10" 135°57'15" 135°57'20" 135°57'25" 135°57'30" 135°57'35" 135°57'40" 135°57'45" 135°57'50" 135°57'55" 135°58' 135°58'5"



# 奈良県 宅地造成等工事規制区域・特定盛土等規制区域の候補区域

## 下北山村 4



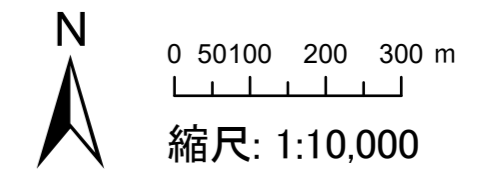
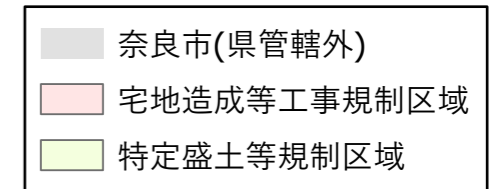
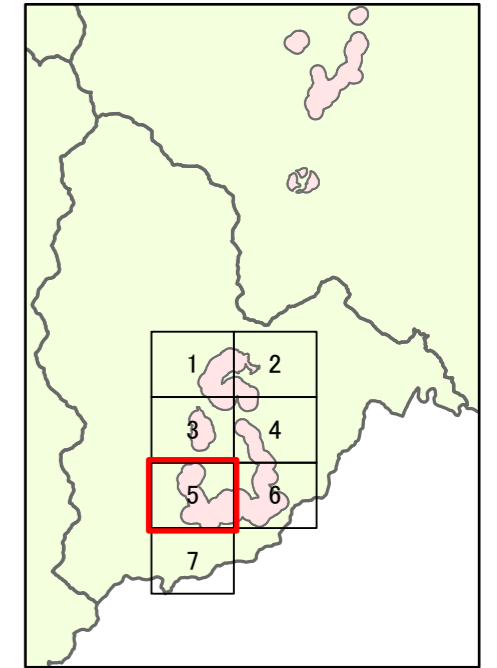
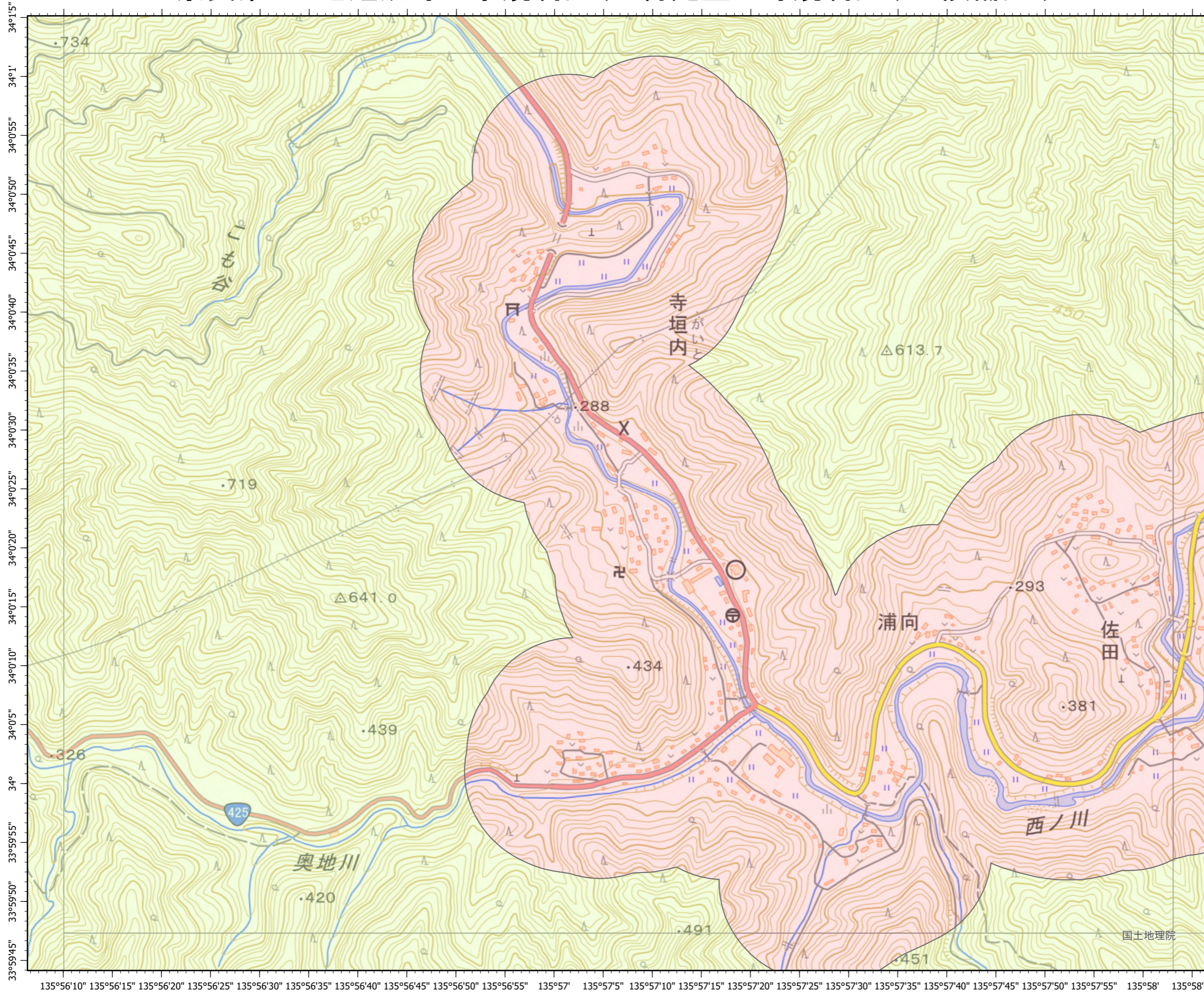
「測量法に基づく国土地理院長承認(使用) R 6JHs 129」

135°58' 135°58'5" 135°58'10" 135°58'15" 135°58'20" 135°58'25" 135°58'30" 135°58'35" 135°58'40" 135°58'45" 135°58'50" 135°58'55" 135°59' 135°59'5" 135°59'10" 135°59'15" 135°59'20" 135°59'25" 135°59'30" 135°59'35" 135°59'40" 135°59'45" 135°59'50" 135°59'55"



# 奈良県 宅地造成等工事規制区域・特定盛土等規制区域の候補区域

## 下北山村 5



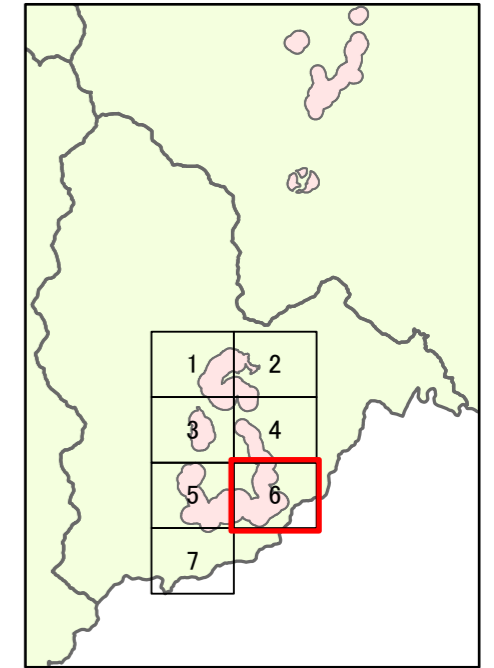
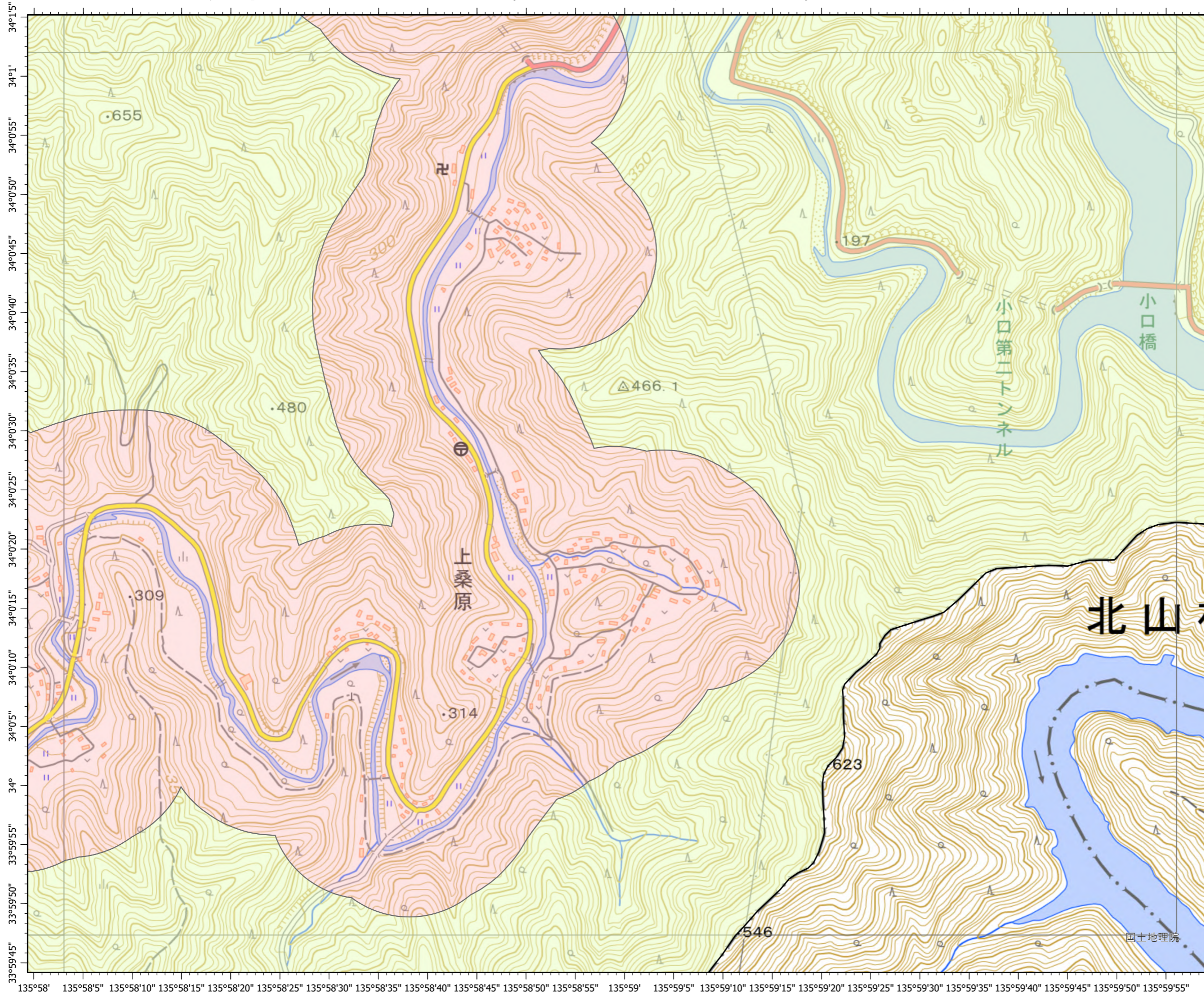
「測量法に基づく国土地理院長承認(使用) R 6JHs 129」

135°56'10" 135°56'15" 135°56'20" 135°56'25" 135°56'30" 135°56'35" 135°56'40" 135°56'45" 135°56'50" 135°56'55" 135°57' 135°57'5" 135°57'10" 135°57'15" 135°57'20" 135°57'25" 135°57'30" 135°57'35" 135°57'40" 135°57'45" 135°57'50" 135°57'55" 135°58'



# 奈良県 宅地造成等工事規制区域・特定盛土等規制区域の候補区域

## 下北山村 6



	奈良市(県管轄外)
	宅地造成等工事規制区域
	特定盛土等規制区域

N

0 50 100 200 300 m

縮尺: 1:10,000

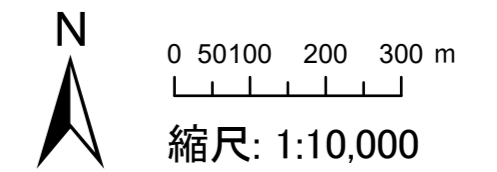
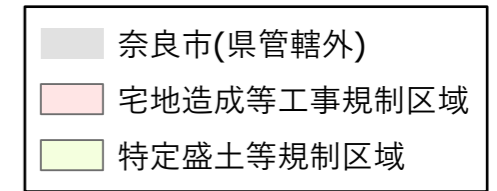
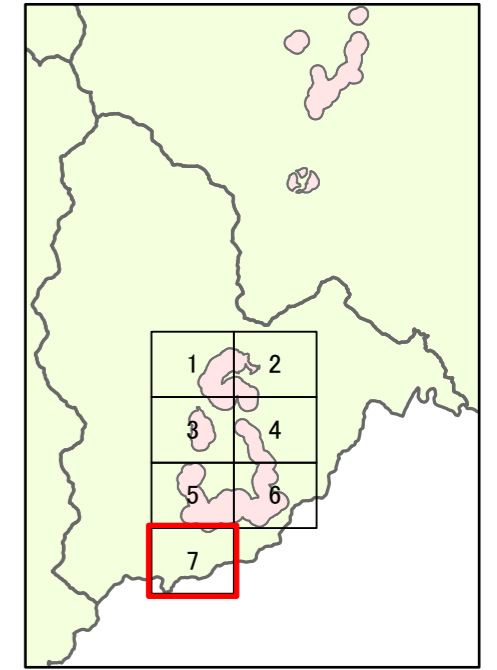
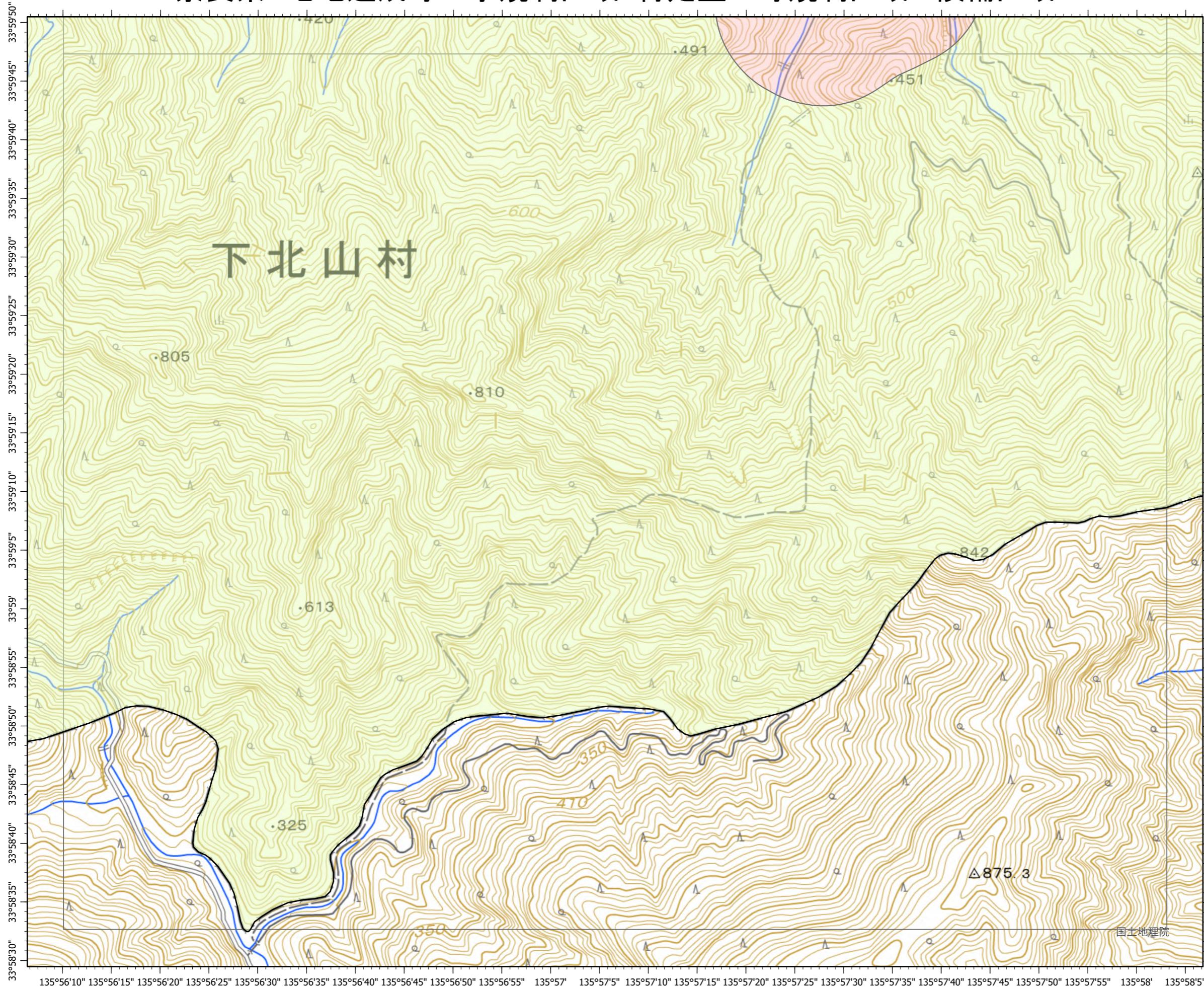
「測量法に基づく国土地理院長承認(使用) R 6JHs 129」

国土地理院



# 奈良県 宅地造成等工事規制区域・特定盛土等規制区域の候補区域

## 下北山村 7



「測量法に基づく国土地理院長承認(使用) R 6JHs 129」